

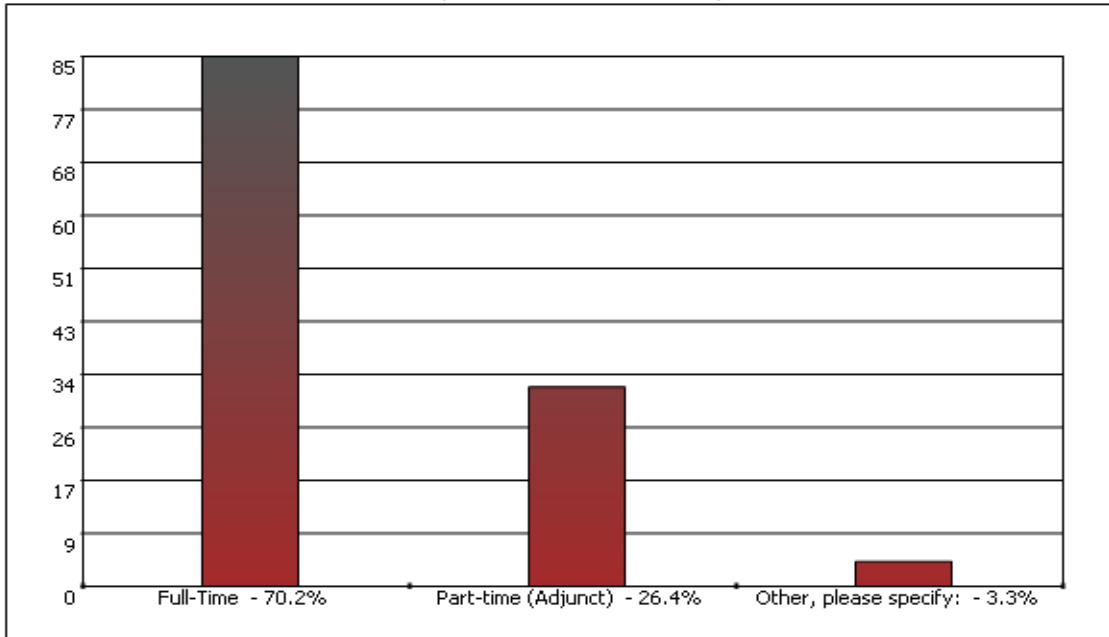
CONGRESSMAN FRANK J. GUARINI LIBRARY NEW JERSEY CITY UNIVERSITY

Faculty Library Survey Results

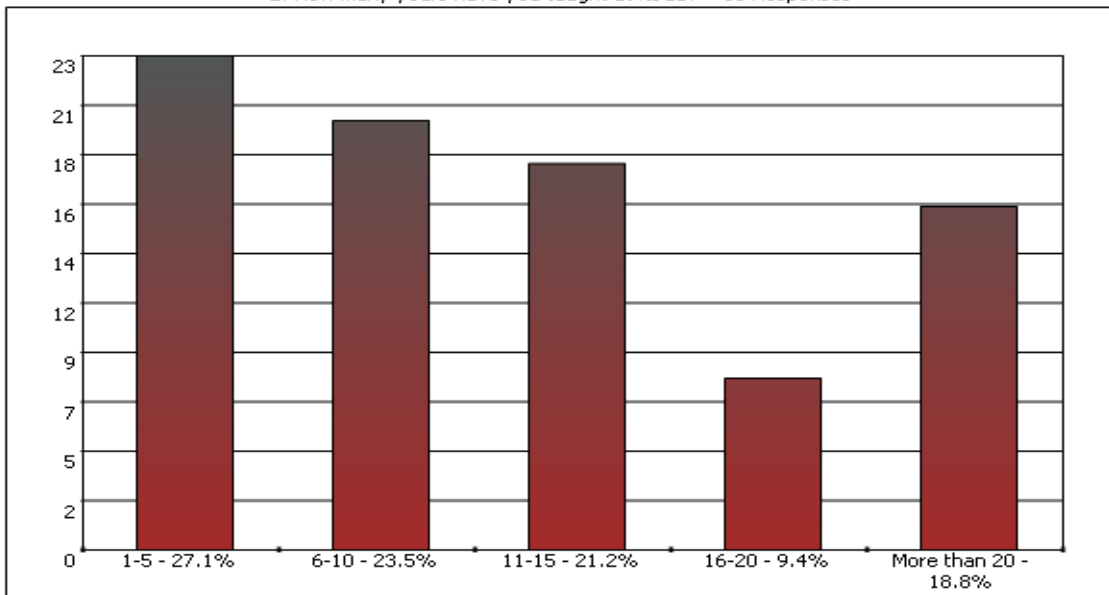
Survey Participants

Total Responses	Total Faculty (2005)	Percentage of Returned Surveys
121 (Print 49-40.5%; Online 72-59.5%)	537	23%

1. What is your NJCU status? - 121 Responses



2. How many years have you taught at NJCU? - 85 Responses



Departments the responders teach in:

College of Arts & Sciences			College of Education			College of Professional Studies		
Top 3 dept.	Art & Media Arts	15	Top 3 dept.	ESL	4	Top 3 dept.	Business	10
	English	15		Literacy Ed.	4		Health Sciences	3
	Sciences	13		Multicultural Ed.	4		Criminal Justice	2
Other Departments		29	Other Departments		12	Other Departments		5
Total		72 (59.5%)	Total		24 (19.8%)	Total		20 (16.5%)

4 (3%) of responders didn't indicate a department.

Authoritativeness and Validity of Information Usage

Do you find that your students cite authoritative and valid information sources in their papers and presentations?

	Full-time faculty	Adjunct faculty
Yes	35 (42.2%)	18 (56.2%)
No	23 (27.7%)	8 (25%)
Other	25 (30.1%)	6 (18.8%)

Among other responses:

4% - Not directly say "Yes", but gave positive responses.

14% - Indicated "It varies" – hard to say "Yes" or "No"

4% - Indicated N/A - insufficient data to comment

In your judgment, what percentage of your students demonstrates an accurate understanding of plagiarism?

Percentages	Full-time faculty	Adjunct faculty
0%-35%	17 (20%)	8 (25%)
50%	15 (18%)	7 (22%)
60%- 100%	36 (42%)	13 (40%)

Some responses considered the difference between undergraduates and graduates, English and other majors, and before and after classes:

- "UG-70% Grad.-99%"
- "UG< 25% Grad.> 50%"
- "Few acknowledge in understanding, but they know when their work is 'lifted'."
- "The undergraduate students in the early years don't always understand. Also, what we consider plagiarism is culturally dependent so we need to be clearer in explaining our expectations. They don't understand they can't just copy from the Internet."
- "Before we go over it, about 5%. After about 80%"
- "Of non-English majors, maybe 15%; of English majors, maybe half. still, i spend a great deal of time in all of my courses discussion the complexities of inadvertent and border-line plagiarism."

In your judgment, what percentage of your students know how to cite sources correctly?

Percentages	Full-time faculty	Adjunct faculty
0%-40%	36 (42%)	9 (28%)
50%	12 (14%)	11 (34%)
60%- 100%	25 (29%)	7 (21%)

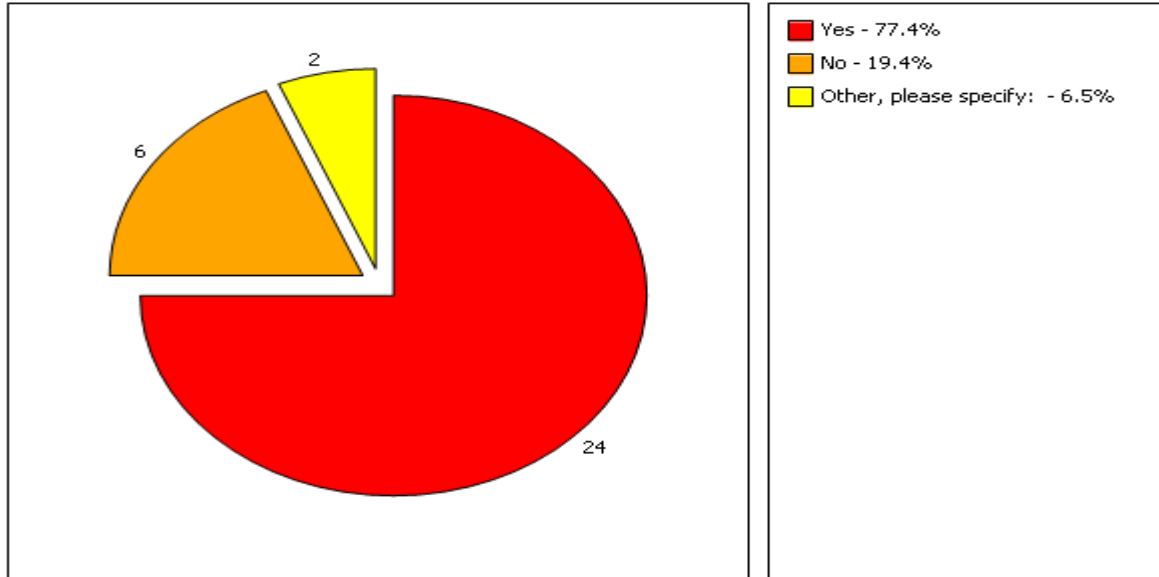
A few responses considered the difference between undergraduates and graduates, as well as English and other majors:

- "20% undergrad 50% grad"

- "Undergrads, 25% Grad students 50%"
- "Undergraduate, less than 20% graduate, more than 50%"
- "Of first and second year students, nearly none. of English majors, about 25%."

Library Promotion & Information Literacy

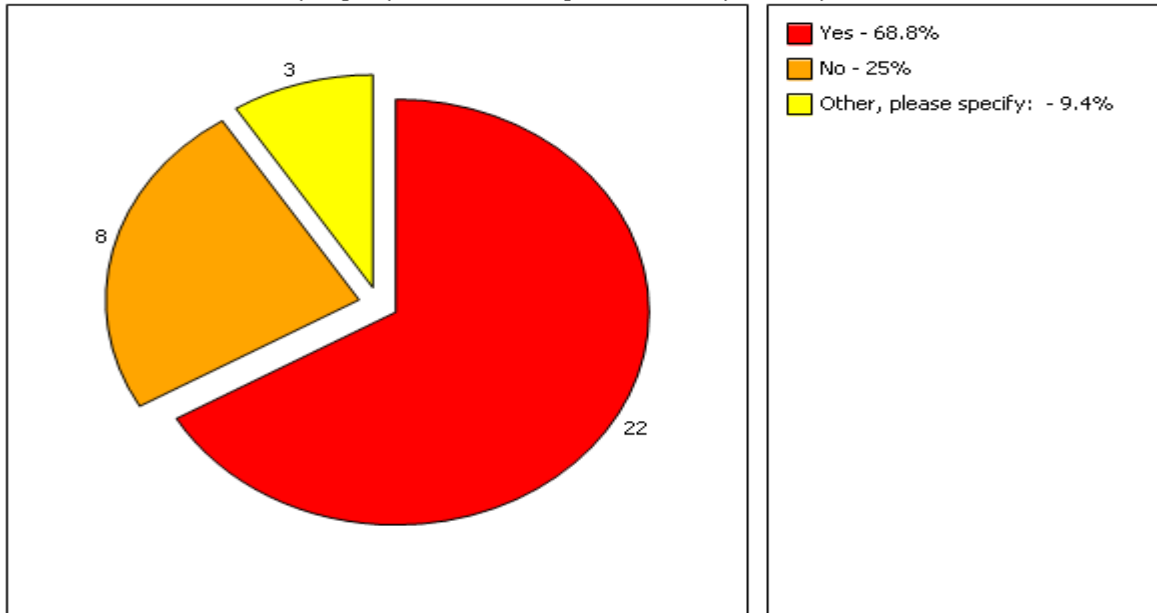
7. Do you provide your students with information about library resources and services?



Messages other than "Yes" or "No":

- "I expect that they learned these skills before they come to my class."
- "Sporadically"
- "In ECII yes, in ECI no"
- "Not yet, but will."

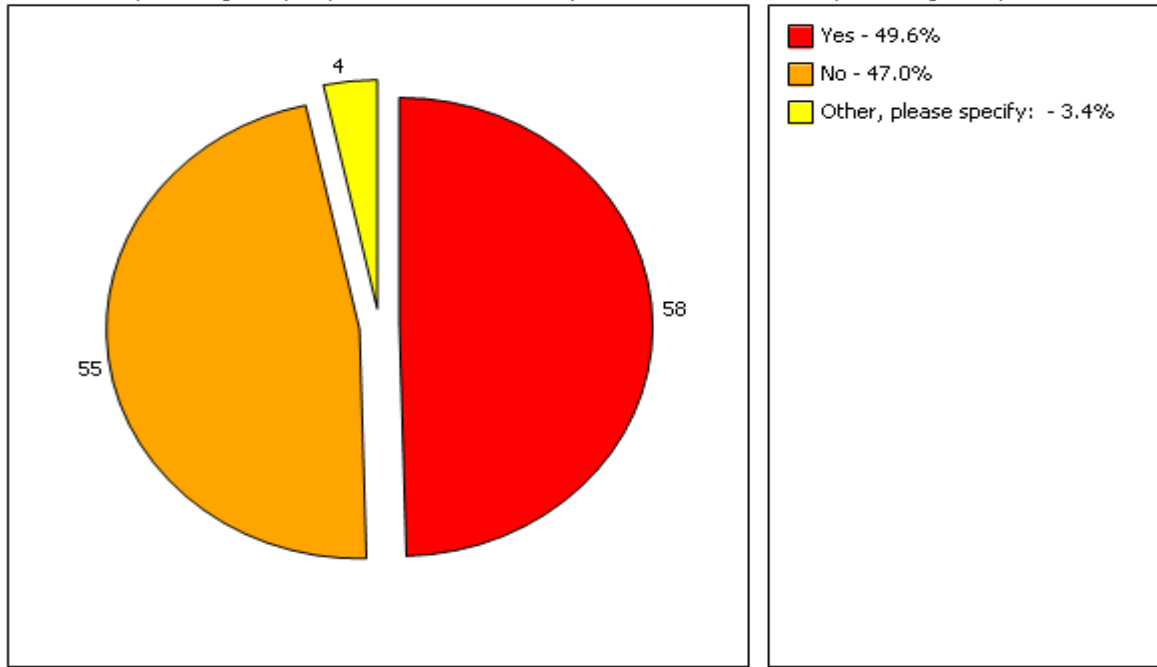
8. Do you give your students assignments that require library research?



Messages other than "Yes" or "No":

- "In ECII, yes, in ECI no"
- "I used to, but the students either didn't do it or dropped the class to not do it."

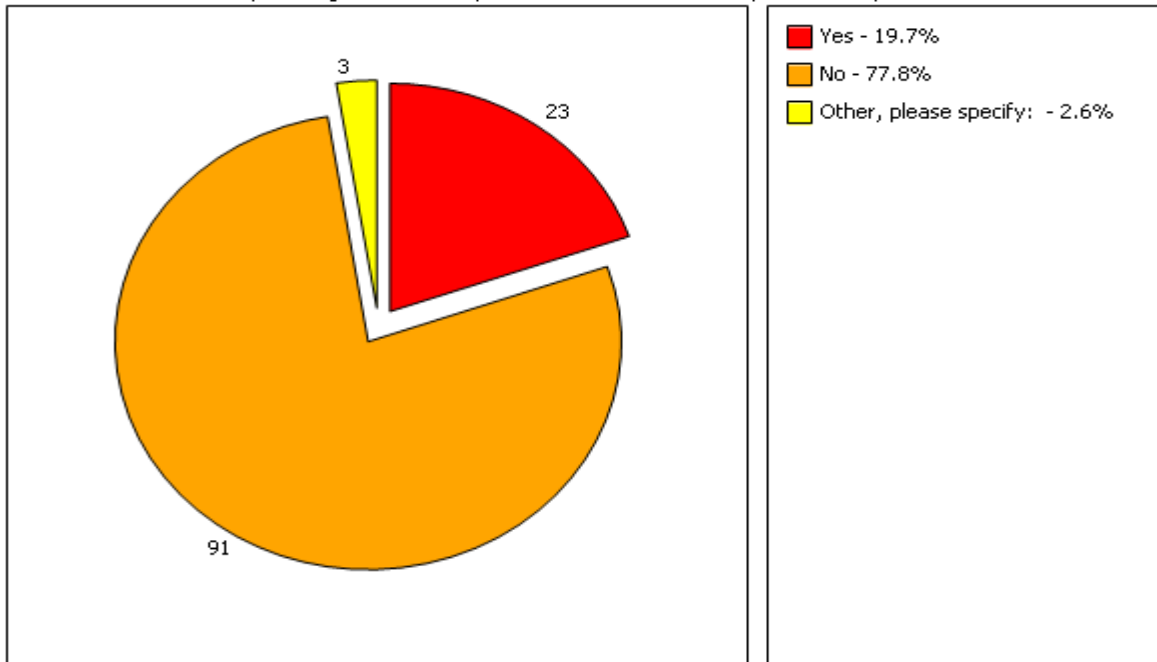
9. Have you brought any of your classes to the Library for an Information Literacy session given by a librarian?



Messages other than "Yes" or "No":

- "Brought a small class in on my own."
- "I used to but I no longer do."
- "I'm not sure what that is. I've brought them for sessions on research."
- "I do it myself."

10. Have you assigned the Library's online Information Literacy Tutorial to your students?

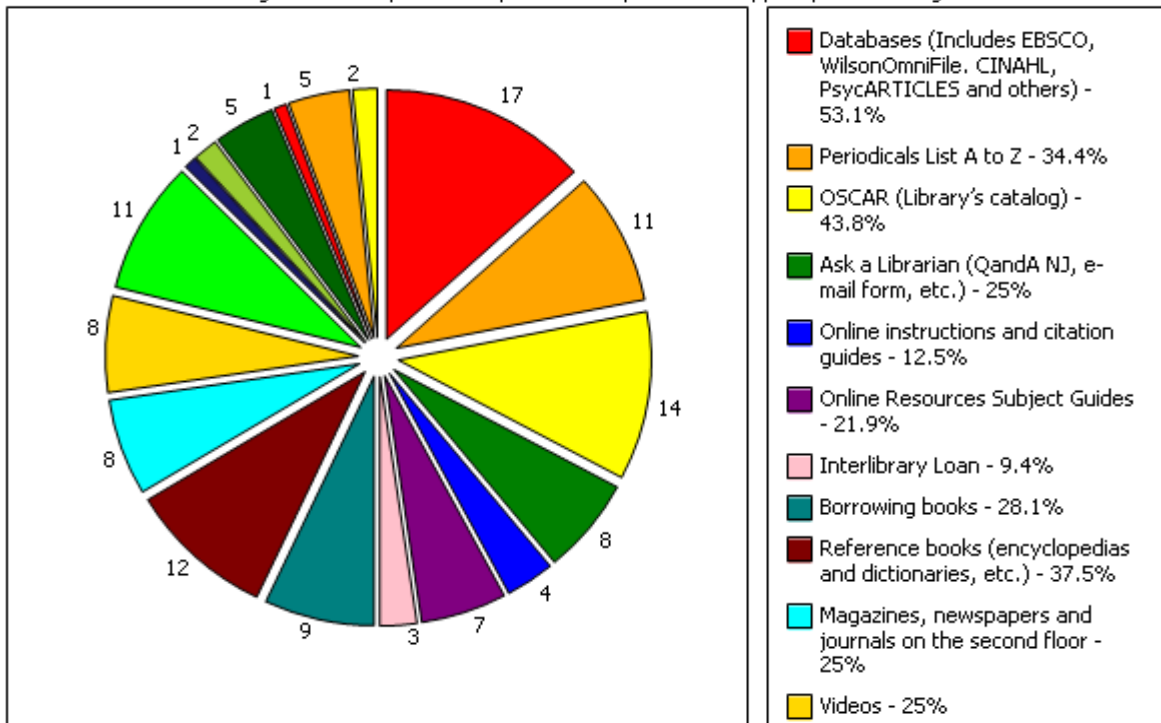


Messages other than "Yes" or "No":

- "Did not know there was one."
- "Haven't used yet"
- "I will do this in my class."

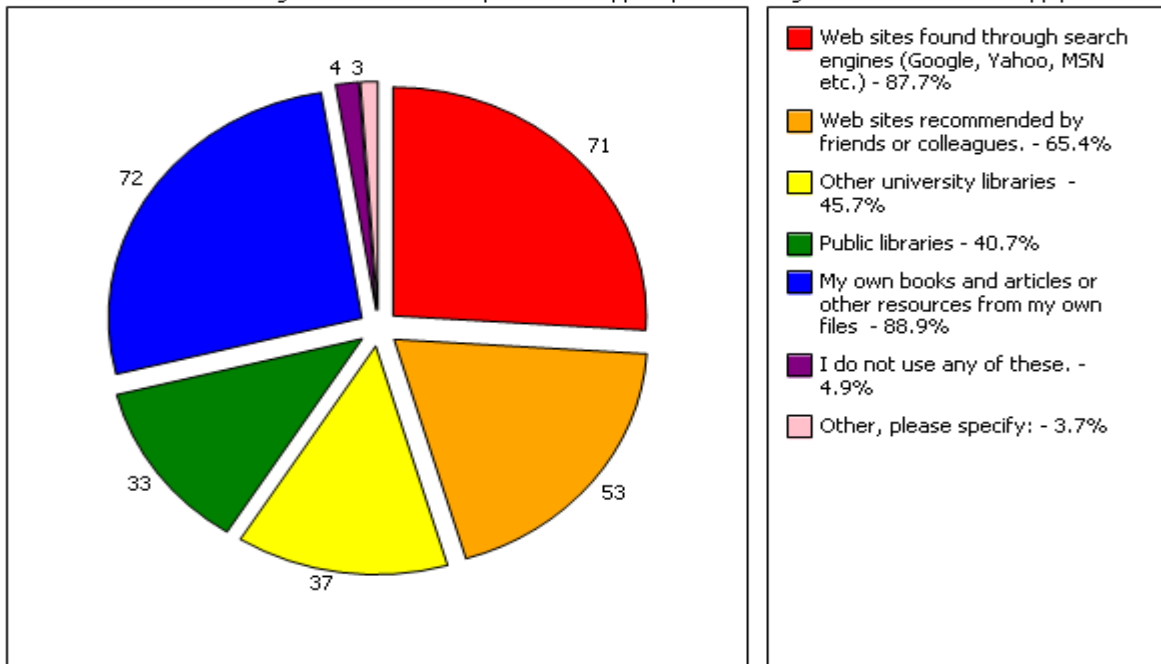
Usage of Resources & Services

11. Which of the following NJCU Library resources/services do you use to support your teaching? Please check all that



9% of the responders said "I do not use any of these (library resources/services)"

12. Which of the following other resources do you use to support your teaching? Please check all that apply. - 81



Other resources used:

- suggested textbooks
- I subscribe to a number of journals and popular science (biology) magazines.
- APA database (online)
- Videos

Ranking of the Resources Most Preferred

1	Databases	50 (41%)
2	Web sites found through search engines	50 (41%)
3	my own resources	29 (23%)

4	OSCAR (Library's catalog)	24 (20%)
5	Videotapes	19 (15%)
6	periodical (Fire Engineering Magazine)	17 (14%)
7	Websites recommended by friends/other specific websites	15 (12%)
8	Other libraries	13 (11%)
9	Reference books	10 (8%)
10	PCs to access WebCT, GothicNet or email	9 (7%)
11	Books	8 (6%)
12	Ask a Librarian (QandA NJ, e-mail form, reference, etc.)	7 (5%)
13	Online Resources	5 (4%)
14	Interlibrary loan	3 (2%)
15	Periodicals List A to Z	3 (2%)
16	Reserve materials for specific classes	3 (2%)
17	Other 11 resources	1 (0.8%)

Comments, Suggestions and Difficulties Encountered

24 (20%) of responses indicated the difficulties they experienced in using the library resources or services. **9(7%)** of responses didn't indicate any difficulties in using the library rather added appreciations on the Library services.

46 (38%) of faculty responders gave comments or suggestions about how we may improve library services. Those comments, suggestions and difficulties encountered are divided into the following aspects:

Faculty Survey Comment Categories			
Databases	10	Information Literacy	14
Access problems	7	IL classes	5
More databases	2	Other kinds of IL education needed	5
Other	1	Citation guide	2
Collections	17	Faculty workshop	2
Specific subject areas	9	Online Tutorial	1
Periodicals & Media resources	3	More convenient services	9
General	2	Online services	3
Other	3	More Facilities & staff	4
Computers & tech help	3	Others	2
Interlibrary loan	4	OSCAR	3
Library Promotion	6	Reference	3
Web Page	2	Positive Comments	14

Contact Information:

Grace Bulaong, Library Director
Congressman Frank J. Guarini Library
New Jersey City University
2039 Kennedy Blvd.
Jersey City, NJ 07305
Telephone: 201-200-2036
Fax: 201-200-2330
gbulaong@njcu.edu