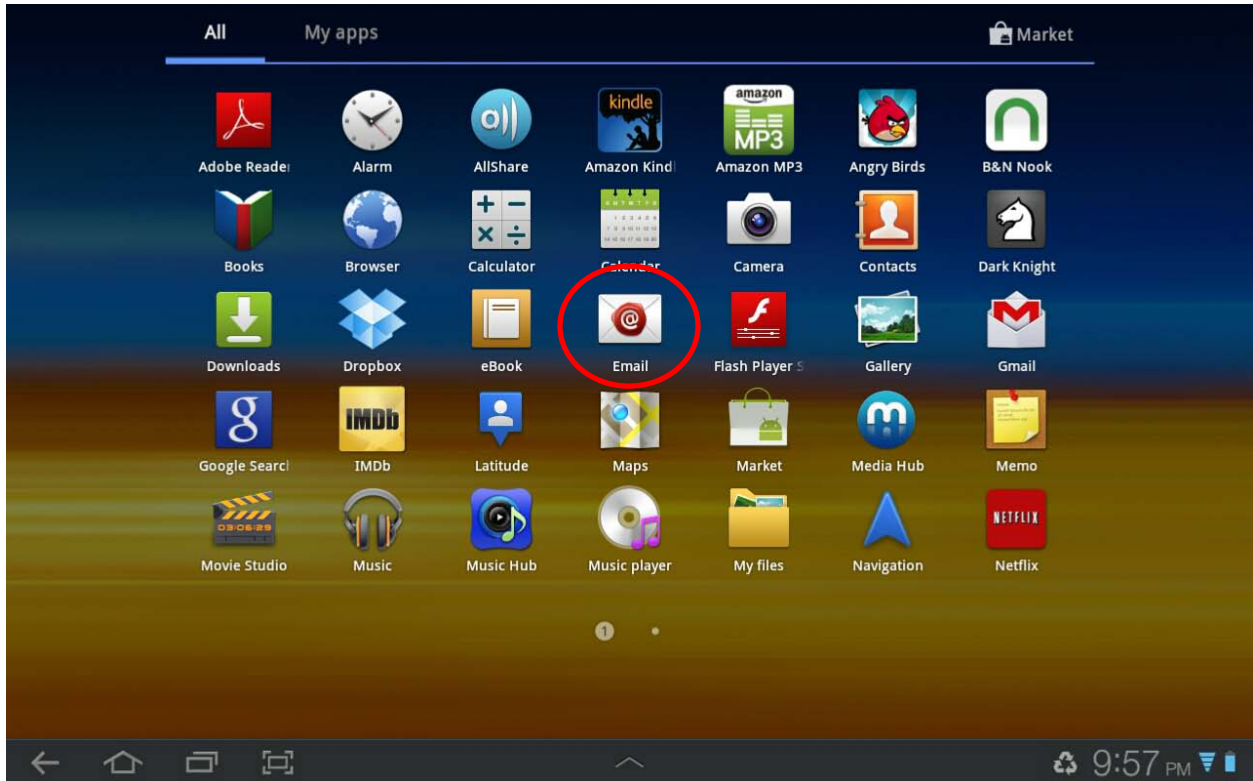


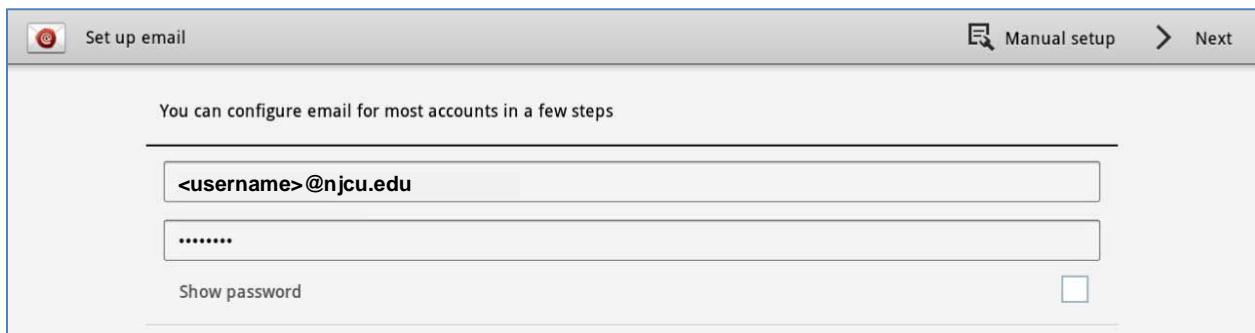
Installing Exchange ActiveSync on an Android Tablet

All Android tablets support Exchange ActiveSync to some degree via the provided email application.

1. Start by opening Applications on the tablet and clicking the Email application¹...

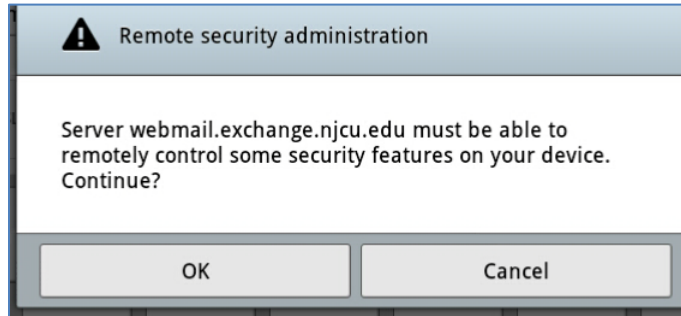


2. Enter your username and password for the Exchange account, then click “Next”...



¹ The examples shown are from a Samsung Galaxy 10.1 tablet. Application icons and dialog presentation and dialog order may be different on other Android tablets but the basic process and information for setup will be the same.

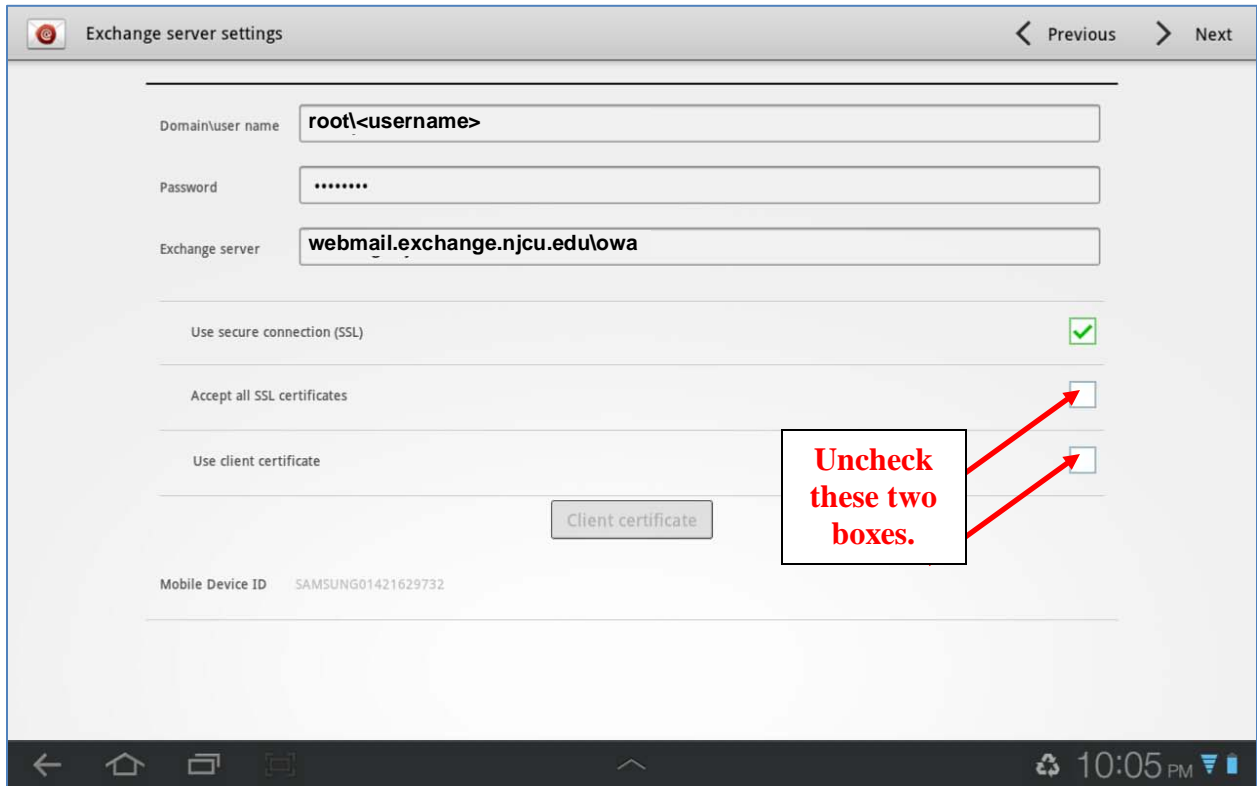
3. You must allow the server to control security on your tablet in order to use ActiveSync. If you agree, click “OK”.



4. Confirm that you have agreed to allow NJCU’s Exchange server to control the following security parameters of your tablet by clicking “Activate”...



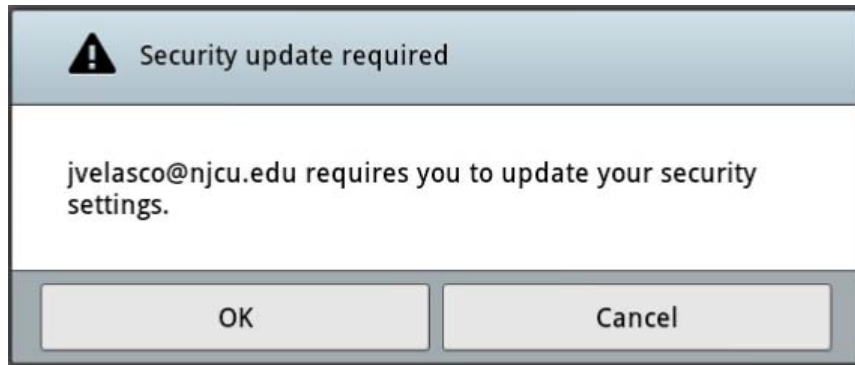
5. Enter the exchange server settings, then click “Next”...



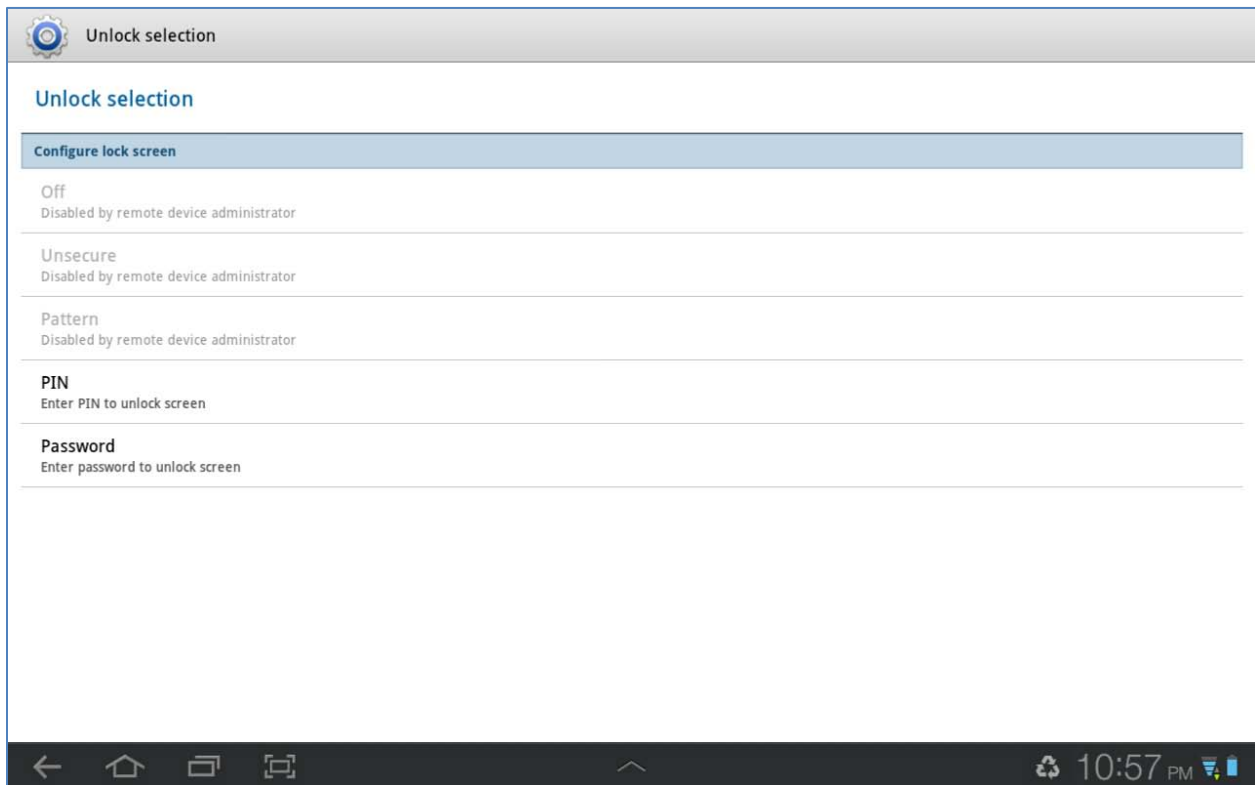
6. Modify/Configure Email client as desired, then click “Next”...



7. Depending on your personal security settings, ActiveSync may ask you to update a security parameter. Click “OK” to continue setup. Clicking “Cancel” will cancel the entire setup process.

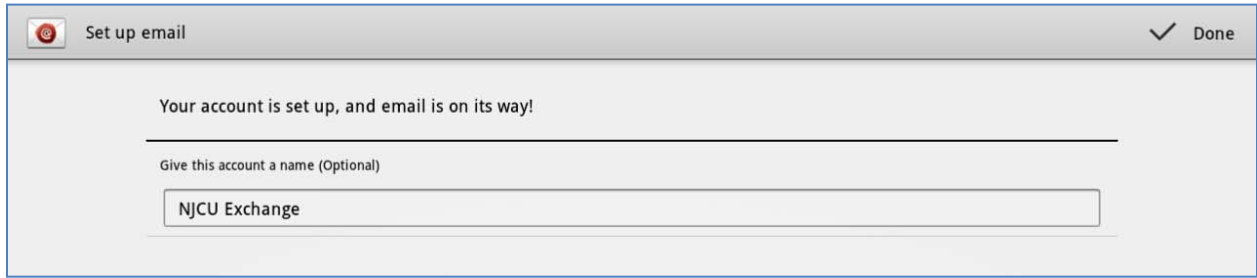


8. In this instance, ActiveSync is requiring the use of a password to Unlock the tablet. Select a preferred security option “PIN” or “Password”.



NOTE: Be sure to remember this password or PIN! You have given ActiveSync and the NJCU Exchange server permission to lock the tablet remotely, and to erase all data from the tablet if too many attempts are made.

9. Enter a name for this account setup. Use “NJCU Exchange” to quickly identify this account among other email accounts you may have, then click “Done”.



10. In a minute or two the application will present the contents of your Exchange Inbox folder...

