

2024
OVERVIEW

NJ State Health Benefits Program (SHBP)

State and State College/University Employees





At Horizon[®], we're guiding members to achieve their best health.

For more than 90 years, Horizon has helped New Jersey residents get the most out of their health care coverage. As a leader in providing access to quality, affordable health plans, we offer an extensive provider network to ensure you're cared for whenever, wherever. We keep things simple – every New Jersey hospital is in our network. Plus, we provide tools and support that make navigating health care easier.

Learn more at HorizonBlue.com/shbp

Health and wellness for mind and body.

Education Resources

Get tips for healthier living with our wide range of online health education topics.

Pregnancy Resources

With personalized support, online tools and interactive resources for moms-to-be, PRECIOUS ADDITIONS® helps you through your pregnancy and beyond. It includes My Pregnancy Assistant, an online tool powered by WebMD®, which has useful videos, trackers and checklists.

Health Management Tools

Track your health securely and confidentially with *My Health Manager*, powered by WebMD.

- Digital coaching and customized tools to manage your health and track your progress
- Interactive, easy-to-use resources to identify health risks
- Weight tracker, calorie counter and nutrition help

HorizonbFitSM

Eligible SHBP members may receive a \$20 reward for every month they participate for at least 12 days a month by:

- Visiting a fitness facility
- Walking at least 10,000 steps
- Submitting at-home workouts using virtual HorizonbFit-at-home features
- Or completing any combination of the above

Wellness Discounts

With Blue365®, get weekly deals from top retailers delivered right to your inbox.

- Fitness memberships, special events and apparel
- Weight management programs and specialty food services
- Discounts on eye care, including frames, lenses and contacts

Learn more at HorizonBlue.com/shbp





Achieve your best health and earn rewards.



The NJWELL program is a great way to make meaningful changes to your wellness habits with program enhancements for eligible members and their covered spouse/partner. NJWELL can help you achieve holistic well-being including:

- Physical fitness
- Emotional balance
- Preventive care
- Social connection
- Financial security

Learn more about NJWELL at HorizonBlue.com/shbp/njwell or visit the NJ Division of Pensions and Benefits website at nj.gov/treasury/pensions.

You can earn \$250 or more in rewards* each wellness year (November 1 to October 31).



Our best coverage, for your best you.

OMNIA_{SM} Health Plan

In addition to having some of our best benefits, our OMNIA Health Plan Option gives you the flexibility to choose from one of New Jersey's largest networks: 67,000+ local doctors, specialists and health professionals and 95 hospitals in 115 convenient locations across New Jersey and parts of Pennsylvania and Delaware.* You also have worldwide access to more than 1.8 million providers in our BlueCard[®] PPO program.

To save even more, choose from more than 49,000 OMNIA Tier 1 doctors* and some of the state's leading hospitals for lower copayments, lower out-of-pocket costs and no deductibles – all with no referrals and no need to choose a Primary Care Physician (PCP).

*Based on Horizon provider network data as of 6/30/2023 and is subject to change.

PPO Plans

All of our PPO plans include:

- Care in network or out of network in New Jersey, nationwide and abroad
- No need to select a PCP
- No referrals necessary to see a specialist
- Lower out-of-pocket costs when using the Horizon Managed Care Network or the BlueCard PPO Network nationwide and Blue Cross Blue Shield Global[®] Core abroad

NJ DIRECT High Deductible Health Plans (HDHPs) combine a high deductible health plan with a health savings account (HSA). Eligible preventive services are covered at 100 percent if in network and do not have a deductible. You are responsible for eligible medical and prescription expenses, up to the deductible.

HMO Plans

With our HMO plans, you have access to health care professionals and facilities in the Horizon Managed Care Network in New Jersey and parts of New York, Pennsylvania and Delaware. You select a licensed PCP from the Horizon Managed Care Network and your PCP will refer you to specialty care when needed. In addition, the Away From Home Care Program is available to eligible HMO members who are outside the State of New Jersey, like students living away from home, long-term travelers and families living apart.



Active employees: Calculate your estimated premium contribution at HorizonBlue.com/shbp.



Learn more at HorizonBlue.com/shbp

2024 NJ SHBP State and State College/University Employees Plans for CWA and Union Negotiated Members



Plans effective 1/1/2024 (effective 12/30/2023 for biweekly employees)

HorizonBlue.com/shbp 1-800-414-SHBP (7427)

OMNIA Tiered Network Option		
OMNIA HEALTH PLAN		
	Tier 1	Tier 2
IN-NETWORK (IN)		
Service Area Available	NJ only	Nationwide
Specialist Referral	No referral required	No referral required
Deductible ²		
Individual	\$0	\$1,500
Family	\$0	\$3,000
Coinsurance	0%	20% after deductible
Coinsurance Out-of-Pocket Maximum		
Individual	Not applicable	\$4,500
Family	Not applicable	\$9,000
Total Out-of-Pocket Maximum (Coplay+Deductible+Coinsurance)		
Individual	\$2,500	\$4,500
Family	\$5,000	\$9,000
HEALTH CARE SERVICES		
Primary Care Office Visit	\$5	\$20
Annual Routine Physical (In-Network Only)	\$0	\$0
Direct Primary Care (DPC) Doctors Office	\$0	\$0
First Responders Doctors Office (FRDOCS)	\$0	\$0
Horizon CareOnline (Telemedicine)	Cost share may apply	Cost share may apply
Specialist Office Visit	\$20	\$35
Annual Routine Vision (In-Network Only)	\$20	\$35
Chiropractic ⁵	\$20	\$35
Physical/Occupational/Speech Therapy ⁶	\$20 office visit/\$20 outpatient facility	\$35 office visit/ 20% after deductible at an outpatient facility
DIAGNOSTIC LABORATORY⁷/RADIOLOGY/ADVANCED IMAGING		
Outpatient Laboratory/Radiology/Advanced Imaging	\$20	20% after deductible
Freestanding Laboratory/Radiology/Advanced Imaging	\$0	\$0
EMERGENCY/URGENT MEDICAL SERVICES		
Urgent Care Center	\$35	\$50
Emergency Room	\$100	\$100
Ambulance	\$0	\$0
OTHER SERVICES		
Inpatient Facility	\$150 per admission ⁹	20% after deductible
Outpatient Facility	\$150	20% after deductible
Outpatient Behavioral Health	\$20	\$35 office visit/ 20% after deductible at an outpatient facility
Durable Medical Equipment (DME)	\$0	\$0
OUT-OF-NETWORK (OON)¹⁰		
Deductible - Individual	No out-of-network benefits	
Deductible - Family		
Coinsurance after Deductible		
Out-of-Pocket Coinsurance Maximum - Individual		
Out-of-Pocket Coinsurance Maximum - Family		
Inpatient Hospital Deductible		

1. High Deductible Health Plan. NJ DIRECT HDLow plan includes \$300 Health Savings Account funding by employer.

2. Deductible applies to all services that require a coinsurance.

3. Includes eligible prescription cost share.

4. On select services (durable medical equipment, prosthetics, orthotics, oxygen, private duty nursing, ambulance).

5. Chiropractic: Horizon HMO: 20 visits per calendar year. OMNIA Health Plan: 25 visits per calendar year. All other plans: 30 visits per calendar year.

6. Physical, occupational and speech therapy: OMNIA Health Plan: 30 visit maximum each per calendar year. Horizon HMO: 60 visit combined maximum per calendar year. All other plans based on medical necessity.

7. Laboratory services must be rendered by an in-network participating provider, with some exceptions based on medical policy.

8. Lower copayment applies to children under 19 and physician referrals.

9. \$150 per admission does not apply to inpatient childbirth, hospice or inpatient behavioral health/substance use disorder.

2024 NJ SHBP State and State College/University Employees Plans for CWA and Union Negotiated Members



Plans effective 1/1/2024 (effective 12/30/2023 for biweekly employees)

HorizonBlue.com/shbp 1-800-414-SHBP (7427)

	PPO Plan Options		
	CWA UNITY DIRECT NJ DIRECT (employees hired prior to 7/1/19)	CWA UNITY DIRECT2019 NJ DIRECT2019 (new hires on or after 7/1/19)	NJ DIRECT HDLow ¹
IN-NETWORK (IN)			
Service Area Available	Nationwide	Nationwide	Nationwide
Specialist Referral	No referral required	No referral required	No referral required
Deductible ²			
Individual	\$0	\$100	\$1,600/ ³
Family	\$0	Not applicable	\$3,200 ³
Coinsurance	10% ⁴	10% after deductible ⁴	20% after deductible ³
Coinsurance Out-of-Pocket Maximum			
Individual	\$800	\$800	\$1,000
Family	\$2,000	\$2,000	\$2,000
Total Out-of-Pocket Maximum (Copay+Deductible+Coinsurance)			
Individual	\$7,560	\$7,560	\$2,600 ³
Family	\$15,120	\$15,120	\$5,200 ³
HEALTH CARE SERVICES			
Primary Care Office Visit	\$15	\$15	20% after deductible
Annual Routine Physical (In-Network Only)	\$0	\$0	\$0
Direct Primary Care (DPC) Doctors Office	\$0	\$0	Not available
First Responders Doctors Office (FRDOCS)	\$0	\$0	\$0
Horizon CareOnline (Telemedicine)	Cost share may apply	Cost share may apply	Cost share may apply
Specialist Office Visit	\$30	\$30	20% after deductible
Annual Routine Vision (In-Network Only)	\$30	\$30	20% after deductible
Chiropractic ⁵	\$30	\$30	20% after deductible
Physical/Occupational/Speech Therapy ⁶	\$30	\$30	20% after deductible
DIAGNOSTIC LABORATORY⁷/RADIOLOGY/ADVANCED IMAGING			
Outpatient Laboratory/Radiology/Advanced Imaging	\$0	\$0	20% after deductible
Freestanding Laboratory/Radiology/Advanced Imaging	\$0	\$0	20% after deductible
EMERGENCY/URGENT MEDICAL SERVICES			
Urgent Care Center	\$45	\$45	20% after deductible
Emergency Room	\$150 ⁸	\$150 ⁸	20% after deductible
Ambulance	10%	10% after deductible	20% after deductible
OTHER SERVICES			
Inpatient Facility	\$0	\$0	20% after deductible
Outpatient Facility	\$0	\$0	20% after deductible
Outpatient Behavioral Health	\$30	\$30	20% after deductible
Durable Medical Equipment (DME)	10%	10% after deductible	20% after deductible
OUT-OF-NETWORK (OON)¹⁰			
Deductible - Individual	\$400	\$400	See in-network deductible ¹¹
Deductible - Family	\$1,000	\$1,000	See in-network deductible ¹¹
Coinsurance after Deductible	30%	30%	40%
Out-of-Pocket Coinsurance Maximum - Individual	\$2,000	\$2,000	\$3,600
Out-of-Pocket Coinsurance Maximum - Family	\$5,000	\$5,000	\$7,200
Inpatient Hospital Deductible	\$500/stay	\$500/stay	Not applicable

10. Out-of-network cost basis: CWA Unity DIRECT, CWA Unity DIRECT2019, NJ DIRECT and NJ DIRECT2019: 175% of CMS (Centers for Medicare & Medicaid Services) fee schedule. NJ DIRECT HD plans: 90th percentile of FAIR Health national benchmark. All plans with an out-of-network benefit also have specified dollar limits for out-of-network chiropractic (\$35), physical therapy (\$52) and acupuncture (\$60).

11. Out-of-network deductible is combined with in-network deductible.

This is not a complete list of all covered services. Exclusions and limitations apply to some services. Visit nj.gov/treasury/pensions/member-guidebooks.shtml for more information.

You can reference HorizonBlue.com/shbp to determine your premium contribution.

Horizon Dental Choice plan available. Please visit HorizonBlue.com/shbp.

Retirees: Please visit nj.gov/treasury/pensions for information regarding available retiree plans.

This document is for informational purposes only and does not constitute a binding agreement. The information provided by this document is not intended to replace or modify the terms, conditions, limitations and exclusions contained within health plans issued or administered by Horizon. In the event of a conflict between the information contained in this document and your plan documents, your plan documents shall control.

2024 NJ SHBP State and State College/University Employees Plans for CWA and Union Negotiated Members



Plans effective 1/1/2024 (effective 12/30/2023 for biweekly employees)

HorizonBlue.com/shbp 1-800-414-SHBP (7427)

	PPO Plan Options		HMO Option
	NJ DIRECT HDHigh		HORIZON HMO
IN-NETWORK (IN)			
Service Area Available	Nationwide		NJ and contiguous counties
Specialist Referral	No referral required		Referral required
Deductible ²			
Individual	\$4,100 ³		See DME
Family	\$8,200 ³		See DME
Coinsurance	20% after deductible ³		0%
Coinsurance Out-of-Pocket Maximum			
Individual	\$1,000		Not applicable
Family	\$2,000		Not applicable
Total Out-of-Pocket Maximum (Copay+Deductible+Coinsurance)			
Individual	\$5,100 ³		\$7,560
Family	\$10,200 ³		\$15,120
HEALTH CARE SERVICES			
Primary Care Office Visit	20% after deductible		\$15
Annual Routine Physical (In-Network Only)	\$0		\$0
Direct Primary Care (DPC) Doctors Office	Not available		Not available
First Responders Doctors Office (FRDOCS)	\$0		\$0
Horizon CareOnline (Telemedicine)	Cost share may apply		Cost share may apply
Specialist Office Visit	20% after deductible		\$30
Annual Routine Vision (In-Network Only)	20% after deductible		\$30
Chiropractic ⁵	20% after deductible		\$30
Physical/Occupational/Speech Therapy ⁶	20% after deductible		\$30
DIAGNOSTIC LABORATORY⁷/RADIOLOGY/ADVANCED IMAGING			
Outpatient Laboratory/Radiology/Advanced Imaging	20% after deductible		\$0
Freestanding Laboratory/Radiology/Advanced Imaging	20% after deductible		\$0
EMERGENCY/URGENT MEDICAL SERVICES			
Urgent Care Center	20% after deductible		\$45
Emergency Room	20% after deductible		\$100 ⁸
Ambulance	20% after deductible		\$0
OTHER SERVICES			
Inpatient Facility	20% after deductible		\$0
Outpatient Facility	20% after deductible		\$0
Outpatient Behavioral Health	20% after deductible		\$30
Durable Medical Equipment (DME)	20% after deductible		\$100 deductible, then covered in full
OUT-OF-NETWORK (OON)¹⁰			
Deductible - Individual	See in-network deductible ¹¹		No out-of-network benefits
Deductible - Family	See in-network deductible ¹¹		
Coinsurance after Deductible	40%		
Out-of-Pocket Coinsurance Maximum - Individual	\$6,100		
Out-of-Pocket Coinsurance Maximum - Family	\$12,200		
Inpatient Hospital Deductible	Not applicable		

2024 NJ SHBP State and State College/University Employees Plans for All Other State Members



Plans effective 1/1/2024 (effective 12/30/2023 for biweekly employees)

HorizonBlue.com/shbp 1-800-414-SHBP (7427)

	OMNIA Tiered Network Option		PPO Plan Options	
	OMNIA HEALTH PLAN		NJ DIRECT (employees hired prior to 7/1/19)	NJ DIRECT2019 (new hires on or after 7/1/19)
	Tier 1	Tier 2		
IN-NETWORK (IN)				
Service Area Available	NJ only	Nationwide	Nationwide	Nationwide
Specialist Referral	No referral required	No referral required	No referral required	No referral required
Deductible ²				
Individual	\$0	\$1,500	\$0	\$100
Family	\$0	\$3,000	\$0	Not applicable
Coinsurance	0%	20% after deductible	10% ⁴	10% after deductible ⁴
Coinsurance Out-of-Pocket Maximum				
Individual	Not applicable	\$4,500	\$800	\$800
Family	Not applicable	\$9,000	\$2,000	\$2,000
Total Out-of-Pocket Maximum (Copay+Deductible+Coinsurance)				
Individual	\$2,500	\$4,500	\$7,560	\$7,560
Family	\$5,000	\$9,000	\$15,120	\$15,120
HEALTH CARE SERVICES				
Primary Care Office Visit	\$5	\$20	\$15	\$15
Annual Routine Physical (In-Network Only)	\$0	\$0	\$0	\$0
Direct Primary Care (DPC) Doctors Office	\$0	\$0	\$0	\$0
First Responders Doctors Office (FRDOCS)	\$0	\$0	\$0	\$0
Horizon CareOnline (Telemedicine)	Cost share may apply	Cost share may apply	Cost share may apply	Cost share may apply
Specialist Office Visit	\$20	\$35	\$30	\$30
Annual Routine Vision (In-Network Only)	\$20	\$35	\$30	\$30
Chiropractic ⁶	\$20	\$35	\$30	\$30
Physical/Occupational/Speech Therapy ⁷	\$20 office visit/ \$20 outpatient facility	\$35 office visit/ 20% after deductible at an outpatient facility	\$30	\$30
DIAGNOSTIC LABORATORY⁸/RADIOLOGY/ADVANCED IMAGING				
Outpatient Laboratory/Radiology/Advanced Imaging	\$20	20% after deductible	\$0	\$0
Freestanding Laboratory/Radiology/Advanced Imaging	\$0	\$0	\$0	\$0
EMERGENCY/URGENT MEDICAL SERVICES				
Urgent Care Center	\$35	\$50	\$45	\$45
Emergency Room	\$100	\$100	\$150 ⁹	\$150 ⁹
Ambulance	\$0	\$0	10%	10% after deductible
OTHER SERVICES				
Inpatient Facility	\$150 per admission ¹⁰	20% after deductible	\$0	\$0
Outpatient Facility	\$150	20% after deductible	\$0	\$0
Outpatient Behavioral Health	\$20	\$35 office visit/ 20% after deductible at an outpatient facility	\$30	\$30
Durable Medical Equipment (DME)	\$0	\$0	10%	10% after deductible
OUT-OF-NETWORK (OON)¹¹				
Deductible - Individual	No out-of-network benefits		\$400	\$400
Deductible - Family			\$1,000	\$1,000
Coinsurance after Deductible			30%	30%
Out-of-Pocket Coinsurance Maximum - Individual			\$2,000	\$2,000
Out-of-Pocket Coinsurance Maximum - Family			\$5,000	\$5,000
Inpatient Hospital Deductible			\$500/stay	\$500/stay

1. High Deductible Health Plan. NJ DIRECT HDLow plan includes \$300 Health Savings Account funding by employer.

2. Deductible applies to all services that require a coinsurance.

3. Includes eligible prescription cost share.

4. On select services (durable medical equipment, prosthetics, orthotics, oxygen, private duty nursing, ambulance).

5. Under age 26.

6. Chiropractic: Horizon HMO: 20 visits per calendar year. OMNIA Health Plan: 25 visits per calendar year. All other plans: 30 visits per calendar year.

7. Physical, occupational and speech therapy: OMNIA Health Plan: 30 visit maximum each per calendar year. Horizon HMO: 60 visit combined maximum per calendar year. All other plans based on medical necessity.

8. Laboratory services must be rendered by an in-network participating provider, with some exceptions based on medical policy.

9. Lower copayment applies to children under 19 and physician referrals.

2024 NJ SHBP State and State College/University Employees Plans for All Other State Members



Plans effective 1/1/2024 (effective 12/30/2023 for biweekly employees)

HorizonBlue.com/shbp 1-800-414-SHBP (7427)

	PPO Plan Options		
	NJ DIRECT15	NJ DIRECT1525	NJ DIRECT2030
IN-NETWORK (IN)			
Service Area Available	Nationwide	Nationwide	Nationwide
Specialist Referral	No referral required	No referral required	No referral required
Deductible ¹			
Individual	\$0	\$0	\$0
Family	\$0	\$0	\$0
Coinsurance	10% ⁴	10% ⁴	10% ⁴
Coinsurance Out-of-Pocket Maximum			
Individual	\$400	\$400	\$800
Family	\$1,000	\$1,000	\$2,000
Total Out-of-Pocket Maximum (Copay+Deductible+Coinsurance)			
Individual	\$7,560	\$7,560	\$7,560
Family	\$15,120	\$15,120	\$15,120
HEALTH CARE SERVICES			
Primary Care Office Visit	\$15	\$15	\$20
Annual Routine Physical (In-Network Only)	\$0	\$0	\$0
Direct Primary Care (DPC) Doctors Office	\$0	\$0	\$0
First Responders Doctors Office (FRDOCS)	\$0	\$0	\$0
Horizon CareOnline (Telemedicine)	Cost share may apply	Cost share may apply	Cost share may apply
Specialist Office Visit	\$15	\$25	\$30/adult, \$20/child ⁵
Annual Routine Vision (In-Network Only)	\$15	\$25	\$30/adult, \$20/child ⁵
Chiropractic ⁵	\$15	\$25	\$30/adult, \$20/child ⁵
Physical/Occupational/Speech Therapy ⁷	\$15	\$25	\$30/adult, \$20/child ⁵
DIAGNOSTIC LABORATORY⁸/RADIOLOGY/ADVANCED IMAGING			
Outpatient Laboratory/Radiology/Advanced Imaging	\$0	\$0	\$0
Freestanding Laboratory/Radiology/Advanced Imaging	\$0	\$0	\$0
EMERGENCY/URGENT MEDICAL SERVICES			
Urgent Care Center	\$15	\$25	\$30/adult, \$20/child ⁵
Emergency Room	\$100 ⁹	\$100 ⁹	\$125
Ambulance	10%	10%	10%
OTHER SERVICES			
Inpatient Facility	\$0	\$0	\$0
Outpatient Facility	\$0	\$0	\$0
Outpatient Behavioral Health	\$15	\$25	\$30/adult, \$20/child ⁵
Durable Medical Equipment (DME)	10%	10%	10%
OUT-OF-NETWORK (OON)¹¹			
Deductible - Individual	\$100	\$100	\$200
Deductible - Family	\$250	\$250	\$500
Coinsurance after Deductible	30%	30%	30%
Out-of-Pocket Coinsurance Maximum - Individual	\$2,000	\$2,000	\$5,000
Out-of-Pocket Coinsurance Maximum - Family	\$5,000	\$5,000	\$12,500
Inpatient Hospital Deductible	\$200/stay	\$200/stay	\$500/stay

10. \$150 per admission does not apply to inpatient childbirth, hospice or inpatient behavioral health/substance use disorder.

11. Out-of-network cost basis: NJ DIRECT and NJ DIRECT2019: 175% of CMS (Centers for Medicare & Medicaid Services) fee schedule. 90th percentile of FAIR Health national for all other health plans with an out-of-network benefit. All plans with an out-of-network benefit also have specified dollar limits for out-of-network chiropractic (\$35), physical therapy (\$52) and acupuncture (\$60).

12. Out-of-network deductible is combined with in-network deductible.

This is not a complete list of all covered services. Exclusions and limitations apply to some services. Visit nj.gov/treasury/pensions/member-guidebooks.shtml for more information.

Horizon Dental Choice plan available. Please visit HorizonBlue.com/shbp.

Retirees: Please visit nj.gov/treasury/pensions for information regarding available retiree plans.

This document is for informational purposes only and does not constitute a binding agreement. The information provided by this document is not intended to replace or modify the terms, conditions, limitations and exclusions contained within health plans issued or administered by Horizon. In the event of a conflict between the information contained in this document and your plan documents, your plan documents shall control.

2024 NJ SHBP State and State College/University Employees Plans for All Other State Members



Plans effective 1/1/2024 (effective 12/30/2023 for biweekly employees)

HorizonBlue.com/shbp 1-800-414-SHBP (7427)

	PPO Plan Options			HMO Option
	NJ DIRECT2035	NJ DIRECT HDLow ¹	NJ DIRECT HDHigh	HORIZON HMO
IN-NETWORK (IN)				
Service Area Available	Nationwide	Nationwide	Nationwide	NJ and contiguous counties
Specialist Referral	No referral required	No referral required	No referral required	Referral required
Deductible ²				
Individual	\$200	\$1,600 ³	\$4,100 ³	See DME
Family	\$500	\$3,200 ³	\$8,200 ³	See DME
Coinsurance	20% after deductible	20% after deductible ³	20% after deductible ³	0%
Coinsurance Out-of-Pocket Maximum				
Individual	\$2,000	\$1,000	\$1,000	Not applicable
Family	\$5,000	\$2,000	\$2,000	Not applicable
Total Out-of-Pocket Maximum (Copay+Deductible+Coinsurance)				
Individual	\$7,560	\$2,600 ³	\$5,100 ³	\$7,560
Family	\$15,120	\$5,200 ³	\$10,200 ³	\$15,120
HEALTH CARE SERVICES				
Primary Care Office Visit	\$20	20% after deductible	20% after deductible	\$15
Annual Routine Physical (In-Network Only)	\$0	\$0	\$0	\$0
Direct Primary Care (DPC) Doctors Office	\$0	Not available	Not available	Not available
First Responders Doctors Office (FRDOCS)	\$0	\$0	\$0	\$0
Horizon CareOnline (Telemedicine)	Cost share may apply	Cost share may apply	Cost share may apply	Cost share may apply
Specialist Office Visit	\$35	20% after deductible	20% after deductible	\$30
Annual Routine Vision (In-Network Only)	\$35	20% after deductible	20% after deductible	\$30
Chiropractic ⁵	\$35	20% after deductible	20% after deductible	\$30
Physical/Occupational/Speech Therapy ⁷	\$35 office visit/ 20% after deductible at an outpatient facility	20% after deductible	20% after deductible	\$30
DIAGNOSTIC LABORATORY⁸/RADIOLOGY/ADVANCED IMAGING				
Outpatient Laboratory/Radiology/Advanced Imaging	20% after deductible	20% after deductible	20% after deductible	\$0
Freestanding Laboratory/Radiology/Advanced Imaging	20% after deductible	20% after deductible	20% after deductible	\$0
EMERGENCY/URGENT MEDICAL SERVICES				
Urgent Care Center	\$35	20% after deductible	20% after deductible	\$45
Emergency Room	\$300	20% after deductible	20% after deductible	\$100 ⁹
Ambulance	20% after deductible	20% after deductible	20% after deductible	\$0
OTHER SERVICES				
Inpatient Facility	20% after deductible	20% after deductible	20% after deductible	\$0
Outpatient Facility	20% after deductible	20% after deductible	20% after deductible	\$0
Outpatient Behavioral Health	\$35 office visit/ 20% after deductible at an outpatient facility	20% after deductible	20% after deductible	\$30
Durable Medical Equipment (DME)	20% after deductible	20% after deductible	20% after deductible	\$100 deductible, then covered in full
OUT-OF-NETWORK (OON)¹¹				
Deductible - Individual	\$800	See in-network deductible ¹²	See in-network deductible ¹²	No out-of-network benefits
Deductible - Family	\$2,000	See in-network deductible ¹²	See in-network deductible ¹²	
Coinsurance after Deductible	40%	40%	40%	
Out-of-Pocket Coinsurance Maximum - Individual	\$6,500	\$3,600	\$6,100	
Out-of-Pocket Coinsurance Maximum - Family	\$13,000	\$7,200	\$12,200	
Inpatient Hospital Deductible	\$600/stay	Not applicable	Not applicable	

With Horizon health plans, we've got you covered.

Well Care and Preventive Care

Services such as an annual physical and gynecological exam, well baby/child medical care, immunizations and an annual vision exam are covered when using a participating doctor.

Behavioral Health and Substance Use Disorder

We empower our members to achieve their best physical and mental health. Our care team will work with you, your family, caregivers and doctors to make sure you are getting the treatment and support you need in the most appropriate setting. Telehealth and virtual programs are available.

In-Network Laboratories

Our members have access to in-network lab services. You can use Quest Diagnostics™ (Quest) or LabCorp for blood tests and other lab services. Our networks also include a number of other participating labs that provide specialized lab services.

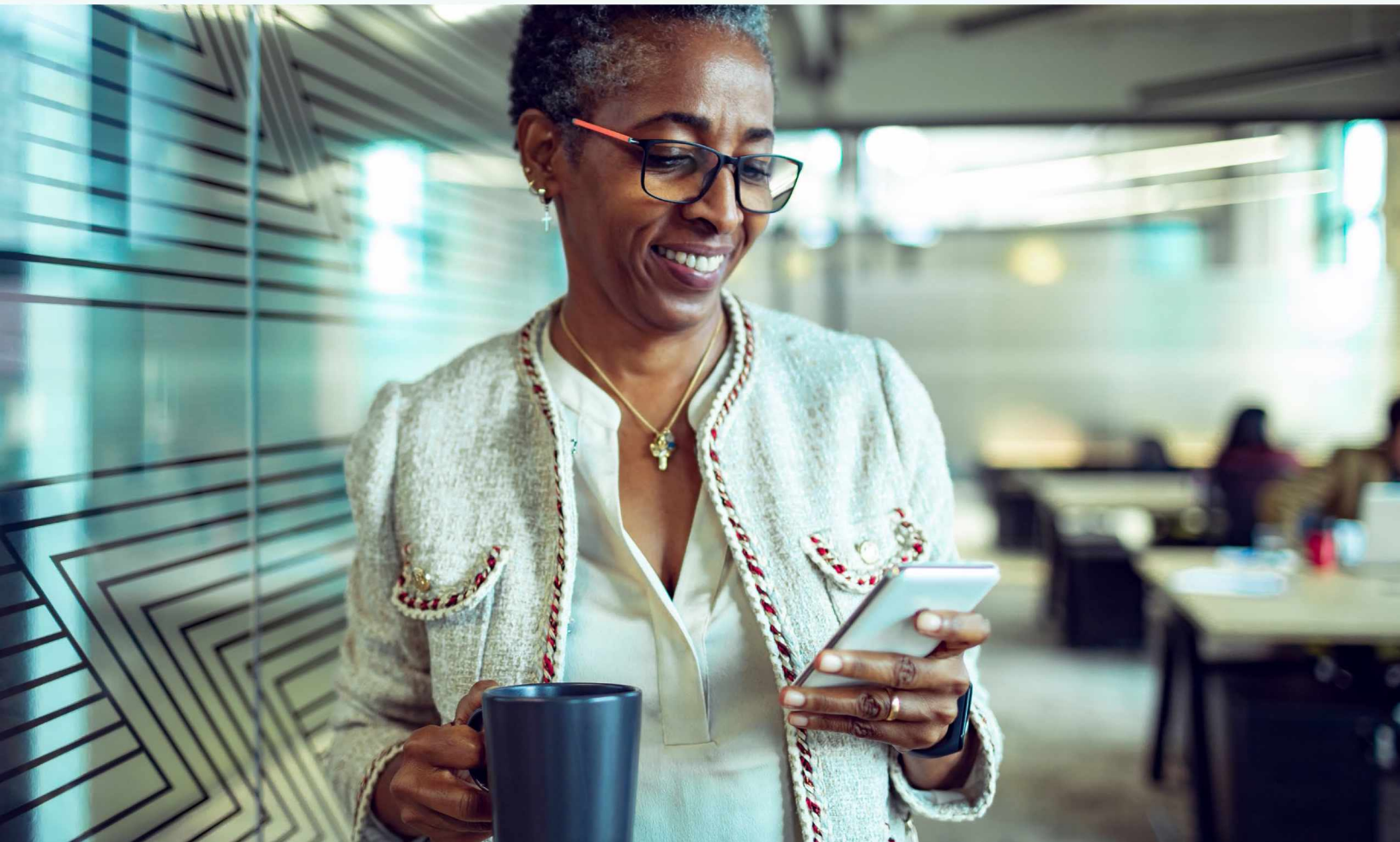
Prescription Drug Coverage

Prescription drug coverage is available to all SHBP and SEHBP members. To learn more, refer to the Prescription Drug Plan information on the NJ Division of Pensions and Benefits website at nj.gov/treasury/pensions.

Health Programs

These programs can help you take control of your health and provide support for managing the challenges of living with conditions such as diabetes, hypertension, back and joint pain, and weight management issues with our partners HingeHealth and Wondr™.

Learn more at HorizonBlue.com/shbp





Making good health care more convenient.

Direct Primary Care (DPC)

Eligible members get unlimited access to personalized care with no copays. Simply choose a DPC doctor from Everside Health or Sanitas Medical Center for you and your covered dependents.

If you are eligible for NJWELL, your DPC provider will credit a well visit and follow-up office visit as a completed health screening.

First Responders Program

If you are an eligible first responder, you and your covered family members can receive care at a First Responders Doctors Office (FRDOCS) with no cost share.

Retail Health Clinics

These clinics treat common health issues such as colds or seasonal allergies.

- On-site board-certified nurse practitioners can diagnose and treat conditions and prescribe medications.
- Sites include MinuteClinics® at select CVS/pharmacy® locations.

Telemedicine

Telemedicine is available at the touch of a button through the Horizon Blue app for eligible members. And depending on your doctor's preferences, you can also use telemedicine via video, chat or phone.

Immunizations

Getting vaccinated is more convenient with more participating pharmacies – view our list at HorizonBlue.com/shbpfllu.

- Vaccines these pharmacies administer include flu, COVID-19, shingles, hepatitis A and B, pneumococcal and human papillomavirus (HPV).
- Medical claims are automatically submitted for you.

Urgent Care Centers

Urgent care centers provide immediate medical care as an alternative to visiting the Emergency Room (ER). They treat wounds, sprains and other conditions that need immediate attention, but are not life-threatening.

- HMO members require a referral to go to a Horizon urgent care center.
- All members are responsible for applicable copayments/coinsurance.
- Routine office visits are not covered at urgent care centers.

Connect to care, benefits and support anytime.

With the Horizon Blue app, you can:

- Get help with appointment scheduling
- Get quick claim status updates
- Video chat with doctors
- View and print member ID Cards
- Locate in-network doctors

Need help registering for our Horizon Blue app or our secure member website? Call the eService Help Desk at **1-888-777-5075** weekdays from 7 a.m. to 6 p.m., ET.



Text **GetApp** to **422-272** for your free Horizon Blue download.*



*There is no charge to download the Horizon Blue app, but rates from your wireless provider may apply.



Here when you need us most.

Visit us online at HorizonBlue.com/shbp. Chat with us online.

Contact us toll free at **1-800-414-SHBP (7427)**.



CWA Unity DIRECT, NJ DIRECT and OMNIASM Health Plans are administered by Horizon Blue Cross Blue Shield of New Jersey (Horizon) and Horizon HMO is administered by Horizon Healthcare of New Jersey, Inc. (HHNJ). Horizon and HHNJ are independent licensees of the Blue Cross Blue Shield Association (BCBSA). The Blue Cross[®] and Blue Shield[®] names and symbols and BlueCard[®], Blue365[®] and Blue Cross Blue Shield Global[®] Core are registered marks of the Blue Cross Blue Shield Association. The Horizon[®] name and symbols and PRECIOUS ADDITIONS[®] are registered marks and HorizonbFitSM, OMNIASM Health Plans are service marks of Horizon. Blue365[®] offers access to savings on items and services that members may purchase directly from independent vendors. Please note that BCBSA may receive payments from Blue365 vendors. Also, neither Horizon nor the BCBSA recommend, warrant or guarantee any specific Blue365 vendor or discounted item or service. Blue365 is not an insurance program and may be discontinued at any time. © 2023 Horizon, Three Penn Plaza East, Newark, New Jersey 07105.

All trademarks, service marks and company names are the property of their respective owners.

NJWELL is administered by the New Jersey Division of Pensions and Benefits. All provisions of the program are established by the Division and are subject to change. *NJWELL Reward cards are issued to participants who are eligible for NJWELL at the time the reward is earned by The Bancorp Bank, Member FDIC, pursuant to a license from Visa U.S.A. Inc. Use your Visa[®] Prepaid card anywhere Visa debit cards are accepted around the world.

WebMD[®] provides health assessment tools and wellness education to eligible SHBP and SEHBP members. WebMD is independent from and not affiliated with Horizon.

Quest Diagnostics[™] and LabCorp are independent companies that provide lab services to eligible SHBP and SEHBP members.

Everside Health and Sanitas Medical Center are independent companies that support Horizon in providing comprehensive primary care, urgent care and preventive care services to eligible SHBP and SEHBP members.

Hinge Health is a health care provider that has contracted with Horizon to provide digital exercise therapy programs to eligible SHBP and SEHBP members. Hinge Health is independent from and not affiliated with Horizon.

The State of New Jersey contracts with Wondr[™] Health to provide weight management services to eligible SHBP and SEHBP members. Wondr Health is independent from and not affiliated with Horizon.

Minute Clinic[®] and CVS are independent from and not affiliated with Horizon.

Apple Inc. and Google LLC are independent from and not affiliated with Horizon.

Horizon complies with applicable Federal civil rights laws and does not discriminate against nor does it exclude people or treat them differently on the basis of race, color, gender, national origin, age, disability, pregnancy, gender identity, sex, sexual orientation or health status in the administration of the plan, including enrollment and benefit determinations.

Spanish (Español): Para ayuda en español, llame al 1-866-660-6528 (TTY 711). Chinese (中文): 如需中文協助, 請致電 1-866-660-6528 (TTY 711).