



Presidential Update on COVID-19

6/5/20

Congratulations NJCU

2020
Class of

And to all of New Jersey's graduating seniors

Your strength during challenging times will
make your future even brighter.



NJCU Virtual Graduation Celebration

Marching Order:

- Virtual celebration - slides were created for each graduating student (1400).
- Names of each student were read and slides included majors, degrees.
- Students were able to add photos and quotes to personalize their slide
- Website will remain open for all students to access slides for the year

New Jersey City University
Class of 2020
Virtual Celebration

Speeches by:

Dr. Henderson

School Deans

Student speaker Leandra Baki

Rashad Wright NJCU Alum and Jersey City Poet Laureate

Also on site:

- Video of Fight Song performed by Music Dance Theater Department
- Students, family and friends were able to do live shout outs through messaging boards, Twitter and Instagram
- Commencement booklet with all student names posted on NJCU website
- Live ceremony postponed until it is safe for large groups to convene

NJCU Class 2020

1425 Undergraduate students

425 Graduate students

15 Doctoral students

1 - Civil Security Leadership, Management and Policy

14 - Educational Technology Leadership

Total Number of Graduates = 1850

Largest Majors

Undergraduate

Psychology - 168 students

Nursing - 165

Graduate

M.A. Urban Education – 48 students



Virtual Celebration

Friday, June 5, 2020

Ed.D – Community College Leadership

- The Community College Leadership program has recruited 22 diverse and talented students for Cohort 2, with individuals from Washington, Pennsylvania, New York and St. Kitts and Nevis representing over 50% of enrolled students.
- The Community College Leadership program has organized and scheduled its 2nd Annual “Community College Showcase Conference” to be held online on July 28, and has secured sponsorship from National Institute for Staff and Organizational Development (NISOD), Stylus Publishing, and Innovative Educators.



College of Professional Studies

- Scott Fisher, Ph.D., Assistant Professor and Co-Chair of the Professional Security Studies department has been accepted into the Krulak Center Non-Resident Fellows Program at the Marine Corps University in Quantico, Virginia. Dr. Fisher also serves as a Major in the Army Reserves.



School of Business

- Dr. Kathy Rennie was named this year's recipient of the Professor Sue Williams Distinguished Teaching award.
- School of Business Student research competition was held. Winners listed in the graph →



The Business & Economics Research Committee

is pleased to announce the winners of the *VIRTUAL 2020 Research Showcase Competition* which recognizes outstanding research projects completed by NJCU business students :

Undergraduate Winners

- **1st place:** Angelica Suarez, Maria Youssef and Yaina Solorzano
- **2nd place:** Yong Sang Cho
- **3rd place:** Uzma Shaikh, Pablo Baiza, Gercy Sorto, Raymond Garcia, Ivyannah Tsuma, Elisa Villalpando and Leander Petroci

Graduate Winners

- **1st place:** Eduardo Alay
- **2nd place:** Amanda Miszczuk
- **3rd place:** Felicia Masihdas

Congratulations to this year's winners!

All entries presented engaging research topics that led to illuminating projects. All participants of the virtual showcase will receive a certificate via email.

We are also proud to announce *the Research Mentor of the year* which honors a faculty member who has shown outstanding commitment to mentoring students.

Congratulations Dr. EunSu Lee

Facilities Updates – Using the Time to Improve Our Campus

- **Campus-wide** HVAC controls upgrades; Campus lighting assessment; Lighting enhancements, emergency generator repairs
- **Gilligan Student Union** - Replaced several floor drains and repairs to floor; installed new domestic water valve and piping; excavated and repaired broken steam pipe
- **Grossnickle** -Replaced major HVAC piping
- **Guarini Library** - Roof replacement, HVAC controls upgrade; Repair emergency generators
- **Hepburn Boiler Plant** - Replaced waste piping; boiler room equipment repaired; repaired boilers & auxiliary equipment

Facilities Updates – Using the Time to Improve Our Campus

- **John J. Moore Athletic and Fitness Center** - Roof repair completed; Repair emergency generators
- **Karnoutsus Hall** - Replaced building cooling pump
- **Professional Studies Building** - Repaired emergency generators
- **Rossey Hall** - HVAC controls upgrade completed; Excavated and repaired broken steam pipe
- **Vodra Hall** - HVAC controls upgraded; Repair emergency generators

CARES Act Funding

- NJCU has received a conditional grant of \$9 Million as part of the CARES ACT funding
- Of this support, NJCU has received \$4.2 Million of Student Support, \$4.2 Million of Institutional Support and \$600,000 of support as an Hispanic Serving Institution



CARES Act Funding (continued)

- Of this support, in FY2020, NJCU has provided approximately \$4 Million of student/housing support to the community in terms of a combination of refunds, credits and direct financial support
- In addition, in FY2020, NJCU expects to use an additional \$1 Million of this funding towards campus-related support in terms of student laptops, capital projects, expanded remote learning capabilities, etc...



COVID 19 Financial Support (continued)

- In FY2021, NJCU is considering a supplemental component to its Institutional Scholarship budget to continue to support students in terms of tuition, fees, housing, etc...
- This supplemental scholarship program will be available for Fall 2020 and Spring 2021;



CARES ACT – Student Portion (Disbursement)

- Notified 4,952 students about their eligibility for CARES funding; personalized application form emailed to their NJCU email accounts
- 1372 awards totaling \$2,559,500 being disbursed on Thursday, May 28 (minimum award=\$250; maximum award=\$3,250; average award=\$1,865)
- An additional 528 applications currently being reviewed
- Total funding available is approximately \$4.1M



How do we reopen?



Three Groups have been formed and are meeting to explore all options:

- Health & Safety – Andre Pearson, Rita Oleas, Jodi Bailey, Jeff Livingston, Julia Basile, Kathleen Mahoney, Ron Hurley, AFT, IFPTE and CWA representatives
- Academic Affairs – Provost Council, Chairs, Senate and AFT representatives
- Student Life/External Affairs – Scott James, Jason Kroll, Shawn Tucker, Jose Balda, Ben Rohdin, Kwi Brennan, Stephanie Chaiken, Sherrie Madia and students

Health & Safety

- The Health and Safety Taskforce is working on a phased in approach to return to normal campus operations, contingent upon any restrictions imposed by the State of NJ
- The committee is designing a one page reference sheet summarizing each phase for a fall reopening
- A final report is being drafted to include more specific details for each departments phased in approach.

NJCU PANDEMIC RECOVERY PLAN

PHASE 1
Maximum
Restrictions

PHASE 2

PHASE 3

NEW NORMAL
Fall 2020 Reopening

Academic Affairs



- Instructional models in the fall semester will include hybrid and blended learning to maintain physical distancing
- In person instruction will require PPEs for faculty and students as well as alterations to classroom space to conform to distancing and low density requirements
- Specialized scheduling for lab instruction and research, performing and visual arts
- Professional development for faculty during summer for best practices in online pedagogy, including continued workshops on enhanced technology

Student Life/External Affairs

OFF CAMPUS
STUDENT AFFAIRS

DIVISION FOR STUDENT AFFAIRS

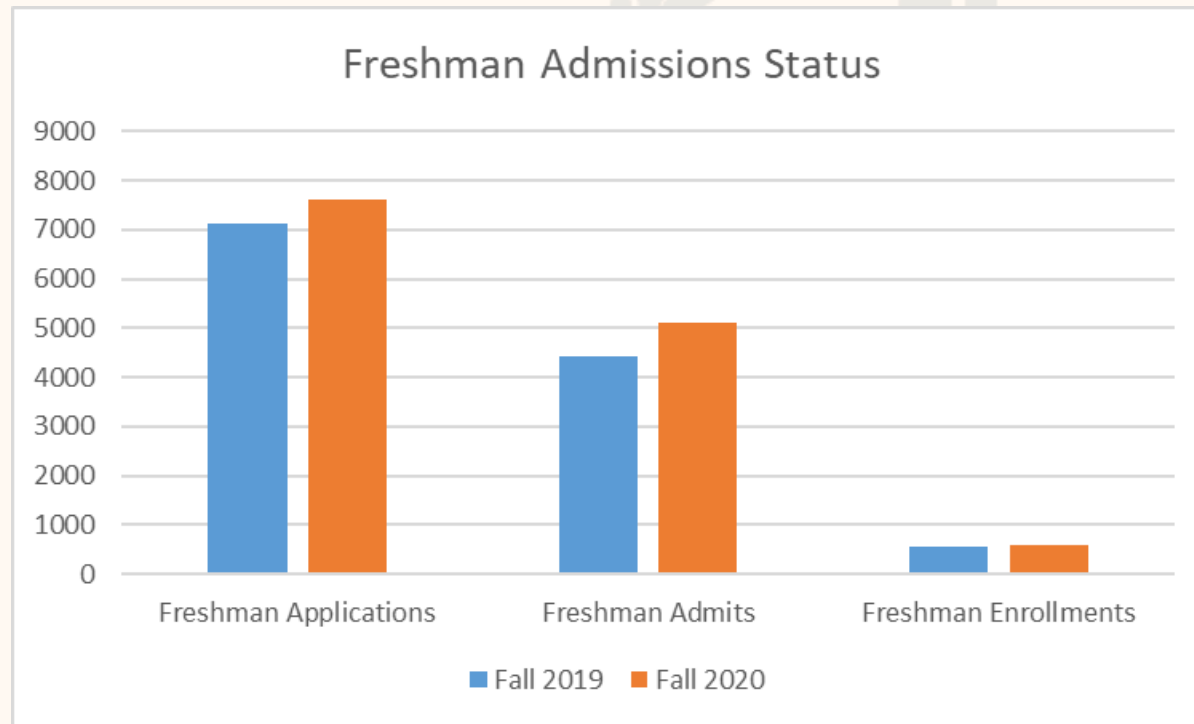
- The Student Life and External Affairs re-opening group developed a framework for a hybrid reopening that ensures low density and social distancing principles which prioritize the health and safety of students, faculty, staff, guests and visitors, while enabling a productive and efficient workflow.
- This group has developed plans to address in-person, virtual, and hybrid scenarios ranging from student services to athletic competitions.

NJIT Plan for Reopening

		Pandemic Recovery Plan				
		phase 0	phase 1	phase 2	phase 3	phase 4
Academics/ Instructional Delivery	 Converged learning (fully remote)	 Converged learning (fully remote)	 Limited in-person learning Critical experiential learning with OSHE waivers	 Converged learning fully implemented Social distancing maintained Face coverings required Appropriate PPE in labs and studios	 In-person learning Online presence maintained to allow swift return to earlier phases if conditions deteriorate	
Campus Safety, Facilities, and Security	 Only essential personnel performing essential tasks	 Limited on-campus work Preparations for campus reopening begin	 25% of staff return to campus Face coverings required HVAC prep for increased ventilation and filtration	 50% of staff return to campus Face coverings required HVAC systems operate with increased ventilation and filtration	 All employees return to work with minimal restrictions Health data and governmental guidance monitored	
Research Continuity	 Research activity suspended Research administration conducted remotely	 Minimal research operations (with approvals) for time-sensitive projects	 Most research restarted with approval Significant social distancing and restricted lab occupancy Appropriate PPE	 Most research restored Minimal social distancing Appropriate PPE	 All research operations fully restored Laboratory and personnel safety protocols must be followed	
Dean of Students and Campus Life	 Only essential personnel performing essential tasks All events held virtually	 Only essential staff may rotate for minimal office coverage Events remain virtual	 Professional staff on rotation to limit occupancy Virtual meetings offered to students for one-on-one and group meetings	 All offices fully open during normal business hours Drop-in visits resume	 All offices fully open during normal business hours Student support services will monitor health conditions and governmental guidance	
Student Activities	 Student organizations meet and hold events virtually All student facilities (e.g.: loungers, game room, and food pantry) are closed	 Student organizations meet virtually Facilities remain closed Food pantry pre-packages bags for pick-up	 Limited meetings and events occur (maximum 25 attendees) with social distancing Virtual options still provided	 Events sponsored by OSU, OSFL, and student organization can be held on campus with appropriate social distancing and safety protocols	 Activities and events permitted with no social distancing All facilities open for NJIT community use	
Residence Life	 Students encouraged to vacate residence halls. Exceptions made on case-by-case basis	 Residence halls remain closed except for authorized students Social distancing required Guest privileges suspended	 Residence Life prepares to welcome students Hall-specific floor bathroom, elevator, kitchen, laundry room, and building policies In-person services by appointment	 Residence Halls welcome students Social distancing and face coverings required in public spaces Events resume with groups of 50 or less Space reserved for quarantine	 Residence Halls operate with no restrictions Space will remain reserved for quarantine as required by health data and governmental guidance	
Dining Services	 Dining rooms and all seated restaurants are closed Pre-packaged food, utensils and beverages available for contactless delivery or pick-up	 Dining rooms and all seated restaurants are closed Pre-packaged food, utensils and beverages available for contactless delivery or pick-up	 Dining rooms and all seated restaurants are closed Pre-packaged food, utensils and beverages available for contactless delivery or pick-up	 Dining areas ensure social distancing GDS associates serve all food Takeaway service encouraged Disposable beverage containers, flatware and to go packaging used	 Dining rooms open with cleaning every 30 minutes GDS associates serve all food Fountain drinks available Dishware and flatware served by GDS	
Athletics	 No in-person activities All athletic facilities closed Only essential personnel performing essential tasks Student-athletes remain off campus with virtual team activities	 No in-person activities All athletic facilities closed Only essential personnel performing essential tasks with approval Student-athletes remain off campus with virtual team activities	 Reintroduce in-person operations at a reduced capacity maximum 25 attendees with strict social distancing Most operations continue virtually Facilities remain closed to the NJIT community	 Operations resume with no staffing restrictions Social distancing encouraged with density minimized Spectator attendance allowed with social distancing and following NCAA conference guidelines	 All operations fully restored with no specific social distancing requirements Facility and personnel safety protocols must be strictly observed Travel monitored for possible hot spots	
Event Services	 All events, including NJIT sponsored and outside group events, are cancelled or moved to virtual delivery	 All events, including NJIT sponsored and outside group events, are cancelled or moved to virtual delivery	 Planning for both NJIT sponsored and external events can begin Virtual events are encouraged Events with maximum 25 attendees and social distancing can occur	 NJIT sponsored events of any size in venues where social distancing can be maintained External events should be minimized Appropriate protocols and procedures should be followed	 NJIT sponsored and external events may resume Appropriate protocols and procedures should be followed	
Administrative Offices	 Only essential personnel performing essential tasks Remaining workforce works remotely	 Staff whose presence is not required on campus should continue to work remotely Social distancing maintained Vulnerable employees whose presence on campus will be required should request reasonable accommodations	 Additional staff return to campus in a limited capacity Total staff on campus should increase to 25% of the workforce during this phase	 Additional staff return to campus in a limited capacity Total staff on campus should increase to 50% of the workforce during this phase, focusing on those supporting teaching, research, and student services	 Staff on campus for full operations, excluding those authorized to work from home.	
Resources	 All non-essential expenditures deferred Operations optimized to reduce utility expenditures Non-essential construction suspended	 All non-essential expenditures deferred Operations optimized to reduce utility expenditures Non-essential construction permitted with appropriate social distancing and face coverings	 Procurement of goods and services to support recovery completed Appropriate use of social distancing and face coverings	 Financial and human resources focused on core mission of university Appropriate use of social distancing and face coverings	 University resources remain focused on support of the university core mission based on Board of Trustees approved budget Distribution of state and federal funds along with university revenue will determine available resources	
Travel	 All university and grant sponsored travel is suspended Use of mass transit is discouraged Rutgers shuttle functions on a limited schedule Kearny route suspended	 All university and grant sponsored travel is suspended Use of mass transit is discouraged Rutgers shuttle functions on a limited schedule Kearny route suspended	 University and grant sponsored travel is permitted with Vice President approval consistent with federal travel restrictions (considering domestic health conditions) Expanded use of mass transit is anticipated	 University and grant sponsored travel is permitted with federal travel restrictions (considering domestic health conditions) Expanded use of Rutgers shuttle and mass transit is anticipated	 University and grant sponsored travel is permitted consistent with federal travel restrictions Rutgers shuttle operating on published schedule Use of mass transit is anticipated	
Information Services and Technology	 IST support services operate remotely except to support essential projects and initiatives Communications with campus community occur virtually	 IST support services operate primarily remotely except to support projects and initiatives Preparations for transition to in-person learning, research, and work begin	 IST support services provide in-person support for faculty, staff, and students with social distancing and control measures in place	 IST support services are staffed appropriate to provide in-person support of research, university operations, and instructional delivery via converged learning	 IST support services are fully staffed to provide support of the university mission Services are prepared to support virtual learning should health data and governmental guidance require a transition	

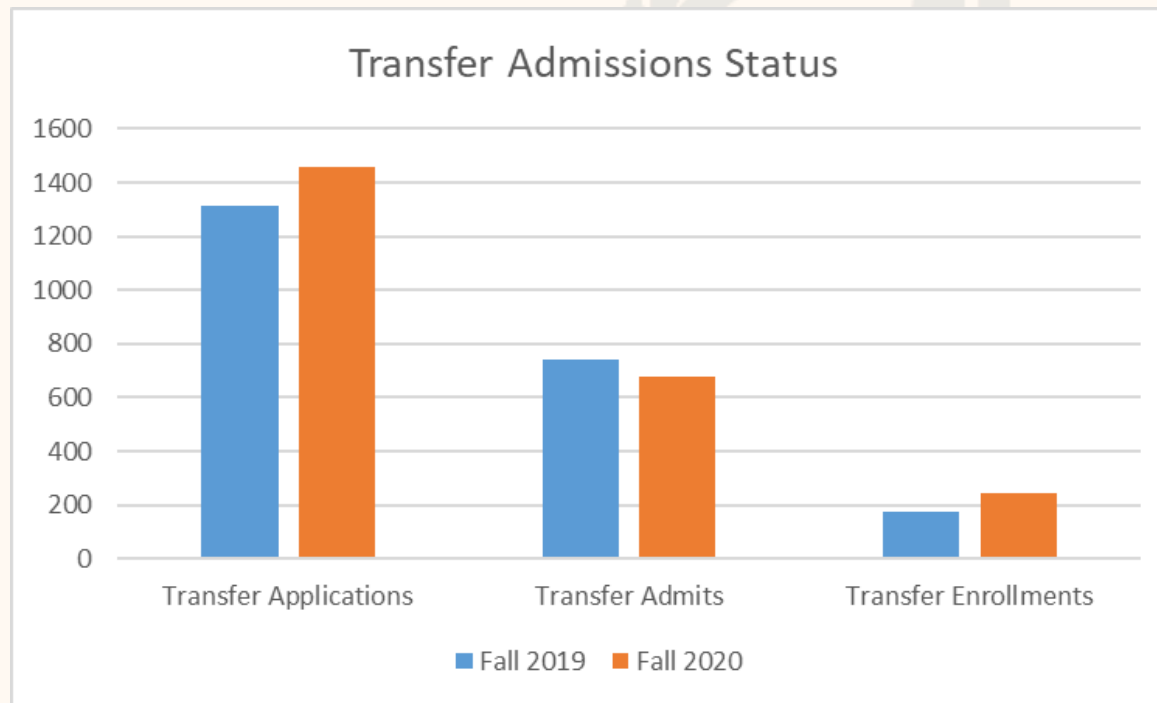


Freshman Registration/Enrollment Update



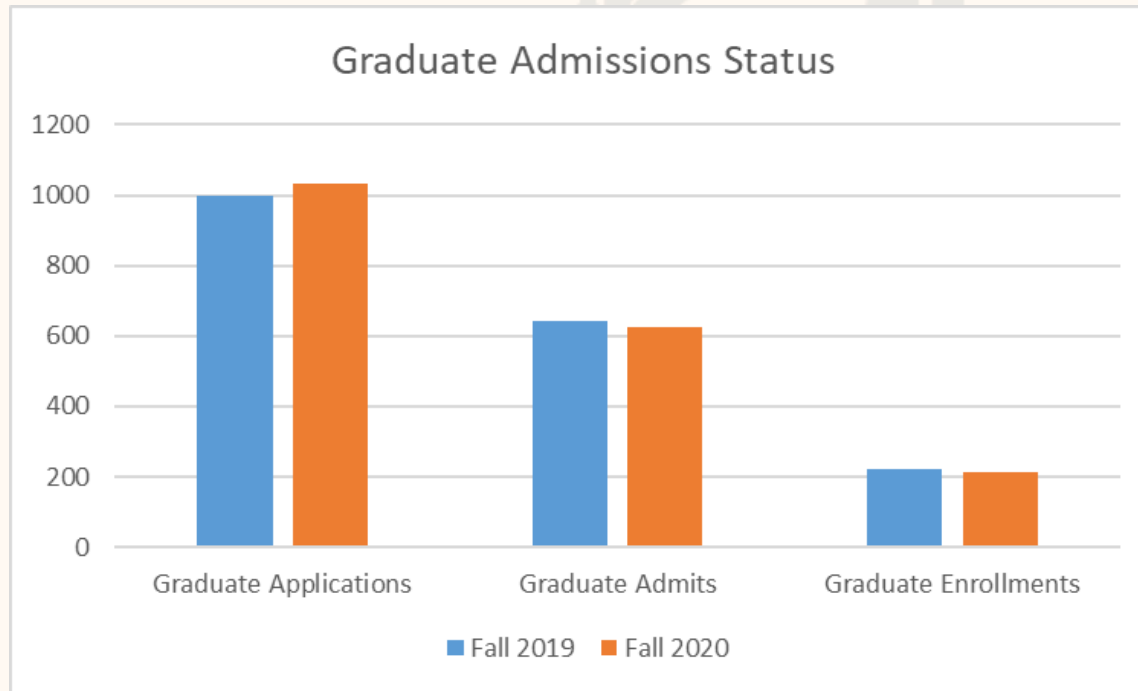
	Fall 2019	Fall 2020	Change
Freshman Applications	7120	7631	7%
Freshman Admits	4425	5125	16%
Freshman Enrollments	562	590	5%

Transfer Registration/Enrollment Update



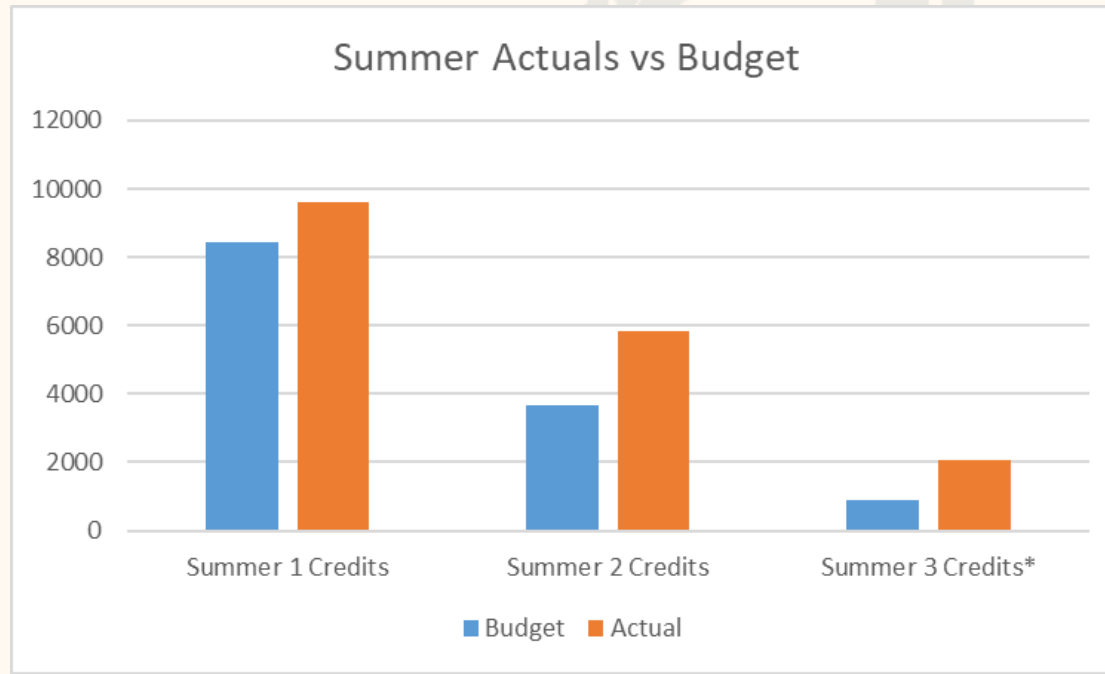
	Fall 2019	Fall 2020	Change
Transfer Applications	1314	1460	11%
Transfer Admits	739	677	-8%
Transfer Enrollments	177	244	38%

Graduate Registration/Enrollment Update



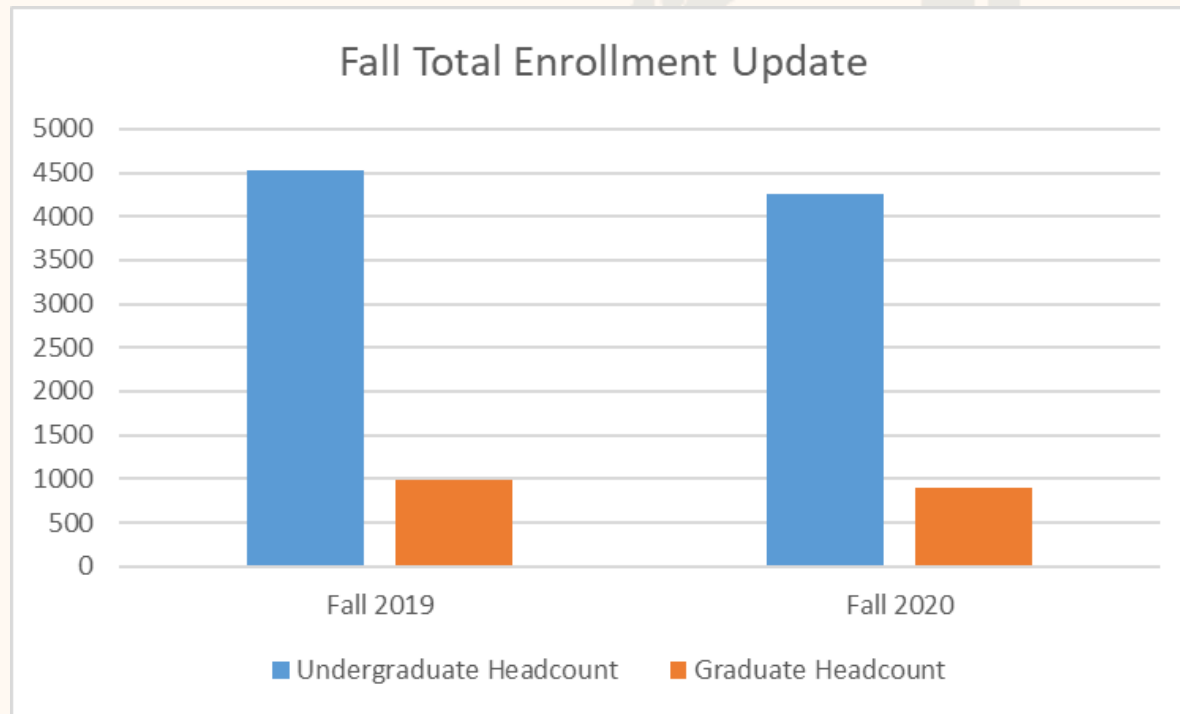
	Fall 2019	Fall 2020	Change
Graduate Applications	997	1031	3%
Graduate Admits	643	626	-3%
Graduate Enrollments	223	214	-4%

Summer Enrollment Update



	Budget	Actual	Performance
Summer 1 Credits	8450	9601	114%
Summer 2 Credits	3670	5840	159%
Summer 3 Credits*	900	2085	232%

Fall Enrollment Update



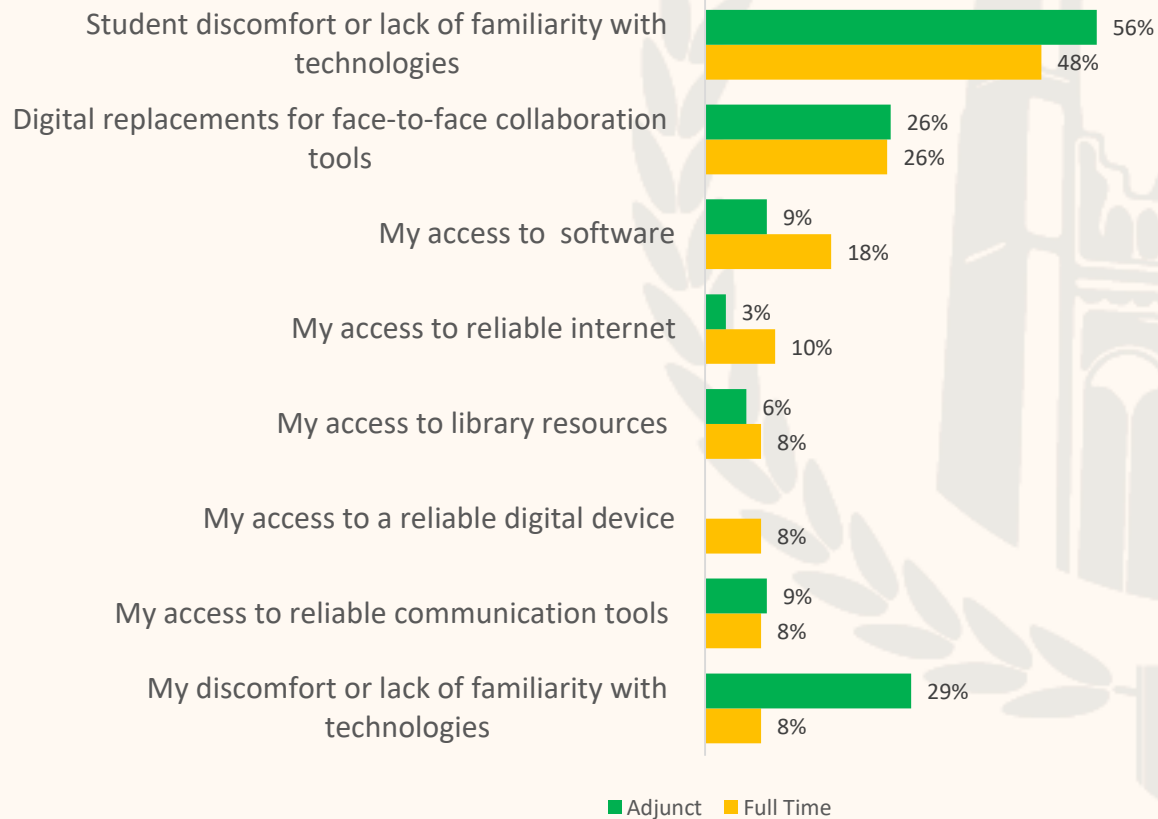
	Fall 2019	Fall 2020	Change
Undergraduate Headcount	4527	4256	-6%
Graduate Headcount	992	893	-10%

EDUCAUSE – Survey Results

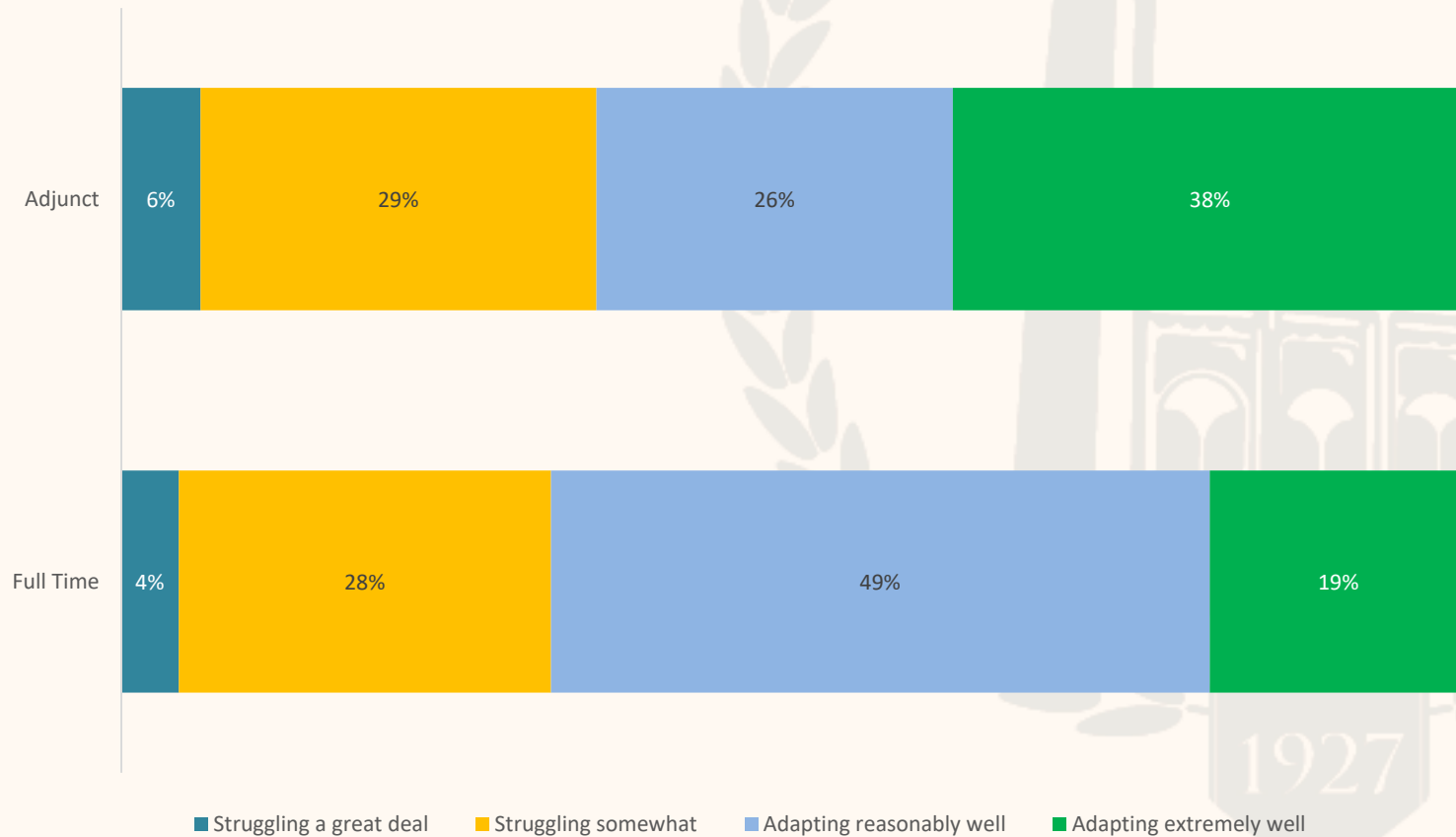
Faculty Portion



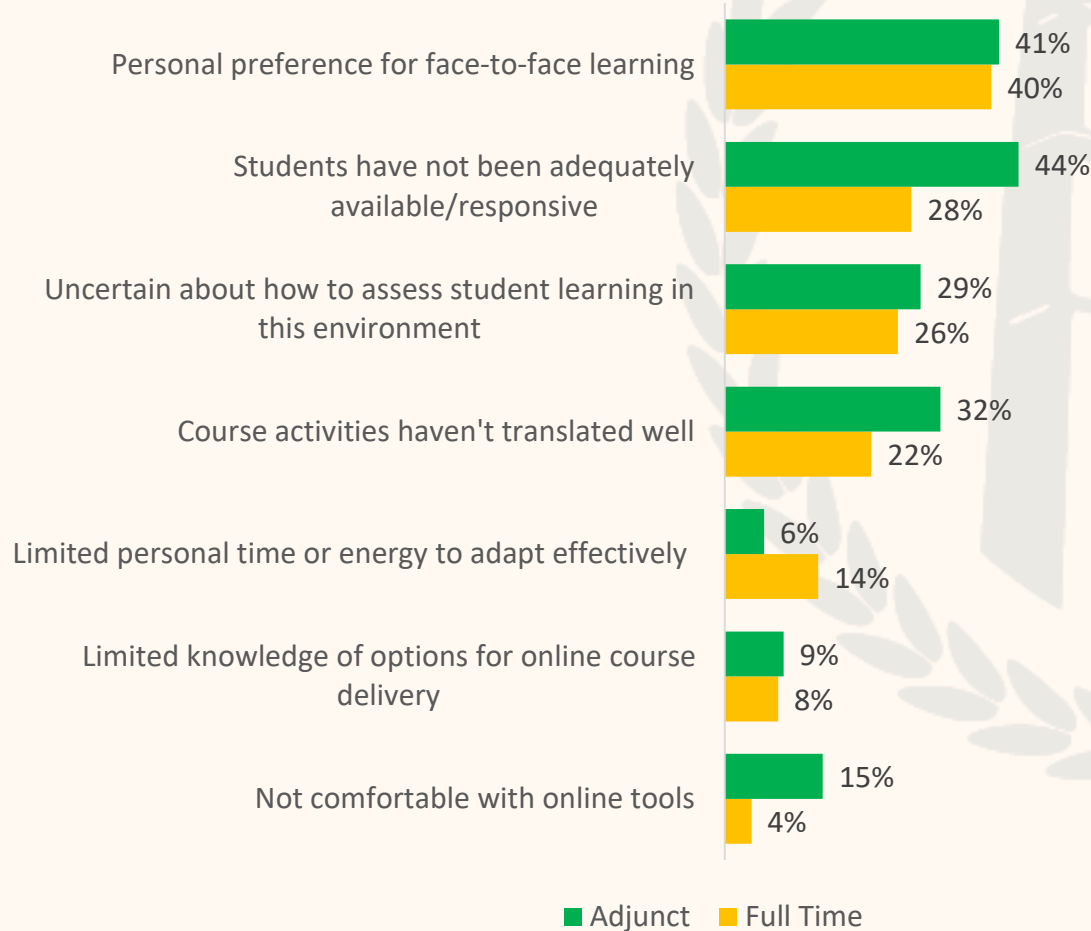
Which of the following technological issues have been a challenge for you since the transition to remote learning? (Check all that apply.)



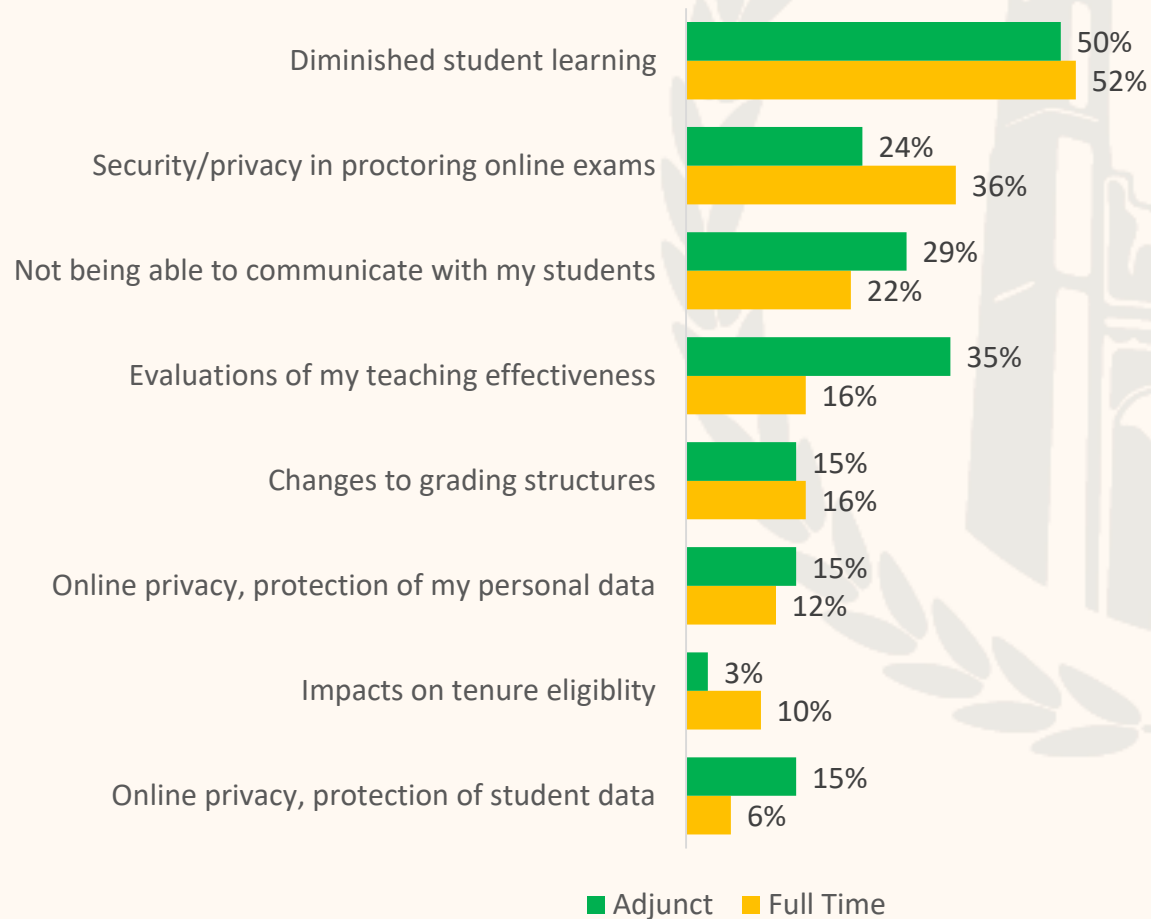
How would you say your students have adapted to remote learning, from your experiences and observations as an instructor?



Which of the following have been challenging for you in adapting course design and/or assignments to remote learning? (Check all that apply.)



What are your biggest concerns with the transition to remote learning so far? (Check all that apply.)



Institutional Update

Two Fridays ago, right after our last update, the Governor indicated the State would NOT provide ANY base allocations for July, August and September, the months when our own revenues from tuition are at their lowest.

Given that 50% (\$5.1) of our remaining operating budget was cut from FY2020 at the end of the year when we barely had time to adjust, this additional cut compounds issues in the institutional budget.

Like all institutions of higher education, we are experiencing odd flows in our enrollment. While our incoming admissions are up- the commitments from them is down. We anticipate a likely 10% drop in enrollment due to these factors – resulting in an additional \$9M revenue shortfall.

QUESTIONS?



NJCU