



**STUDENT RIGHT TO KNOW
CAMPUS SECURITY
&
FIRE SAFETY REPORT
2021**



**NEW JERSEY CITY UNIVERSITY
2039 KENNEDY BOULEVARD
JERSEY CITY, NJ 07305**

Table of Contents

Annual Security Report.....	4
Introduction.....	4
Mission.....	5
Department of Public Safety Facts.....	5
NJCU Department of Public Safety	5
Reporting a Crime.....	6
Contacting the Department of Public Safety.....	6
Emergency Phones.....	7
Caller I.D.....	7
Procedures for Disclosure	7
Timely Warnings	7
Emergency Response & Evacuation Procedures	7
Emergency Preparedness	7
Emergency Notification.....	8
Emergency Notification & Response.....	9
Crime Log	9
Notification to the Larger Community.....	9
Exercises and Drills	9
Campus Facilities.....	10
Housing Options	10
Residence Halls.....	10
Missing Persons	11
Missing Resident Student.....	11
Reporting Missing Persons	11
Student Rights and Responsibilities Code of Conduct	11
Preamble:	11
Campus Sexual Assault Policy	12
Consent	12
Confidentiality	12
Notice of Non-Discrimination and Title IX.....	13
Reporting Possible Title IX Violations.....	13
University Resources:	14
Off Campus Resources:	14
TITLE IX Compliance.....	15

Guidelines for the Reporter to Follow if a Sexual Assault Has Occurred	16
Education and Prevention	16
University Disciplinary Action	16
Campus Sexual Assault Procedures	16
The Rights of the Reporter and the Respondent	17
The Rights of the Reporter:.....	17
The Rights of the Respondent:.....	18
Sexual Assault Hearing Panel	19
Selection Process	19
Sex Offender Registry.....	19
Crime Prevention	19
Crime Prevention and Residential Safeguards.....	19
Weapons Violations Policy.....	20
Emergency Resource Numbers.....	21
Crime Definitions - Uniform Crime Reporting Handbook	22
Sex Offenses Definitions from the National Incident-Based Reporting System Edition of the Uniform Crime Reporting Program.....	23
VAWA Offenses	23
Definitions of Geography.....	24
Offense Definitions For Hate/Bias Related Crime Statistics As Per The UCR Hate Crime Reporting Guidelines	25
Campus Map	26
Crime Statistics	27
Crime Statistics (cont.).....	28
Hate Crimes	29
Hate Crimes Statistics	29
Annual Fire Safety Report on Student Housing.....	30
Introduction.....	30
Higher Education Opportunity Act	30
On-Campus Student Housing and Life Safety Systems.....	31
Fire Safety Policies for On-Campus Student Housing Facilities	32
Emergency Evacuation in Case of Fire.....	33
Training.....	34
Health and Safety Inspections.....	34
Fire Drill Procedure	35
Definitions.....	36
Additional Resources	37

Annual Security Report



Introduction

The *Jeanne Clery Disclosure of Campus Security Policy and Campus Crime Statistics Act*, codified at 20 USC 1092 (f) as a part of the Higher Education Act of 1965. It is a federal law that requires colleges and universities to disclose specific timely and annual information about campus crime and security policies.

The Clery Act, originally enacted by Congress and signed into law by President George Bush in 1990 as the **Crime Awareness and Campus Security Act of 1990**, was championed by Howard and Connie Clery after their daughter Jeanne was murdered at Lehigh University in 1986. They also founded the non-profit Security On Campus, Inc. in 1987. Amendments to the Act in 1998 renamed it in memory of Jeanne Clery.

The Campus Security Act requires Colleges and Universities to:

1. Publish an annual report every year by October 1st that contains three years of campus crime and certain security policy statements.
2. Disclose crime statistics for the campus, public areas immediately adjacent to or running through the campus and certain non-campus facilities and remote classrooms.
3. The statistics must be gathered from campus police or security, local law enforcement and other university officials who have “significant responsibility for student and campus activities.”

Each school must disclose crime statistics for the campus, unobstructed public areas immediately adjacent to or running through the campus, and certain non-campus facilities including off campus housing and remote classrooms. The statistics must be gathered from campus police or security, local law enforcement, and other school officials who have “significant responsibility for student and campus activities” such as student affairs. Professional mental health and religious counselors are exempt from reporting obligations, but may refer patients to a confidential reporting system which the school may indicate to be either on or off-site.

Crimes are reported in the following 10 major categories, with several sub-categories: 1. Criminal Homicide broken down by (a) Murder and Non negligent Manslaughter (b) Negligent manslaughter; 2. Sex Offenses broken down by (a) Forcible Sex Offenses (includes rape) and (b) Non Forcible Sex Offenses, 3. Robbery, 4. Aggravated Assault, 5. Burglary, 6. Motor Vehicle Theft, 7. Arson, 8. Domestic Violence, 9. Dating Violence, 10. Stalking.

The second category of statistics that must be disclosed is Hate Crimes. A Hate Crime is a criminal offense that manifests evidence that the victim was intentionally selected because of the perpetrator’s bias against the victim. Hate Crimes broken down by (a) Race, (b) Sexual Orientation, (c) Gender, (d) Gender Identity, (e) Ethnicity, (f) Religion, (g) National Origin and (h) Disability.

Violence Against Women Act (**VAWA**) is the third category of crime statistics that must be disclosed. These are Dating Violence, Domestic Violence, Sexual Assault and Stalking are considered crimes for the purposes of Clery Act reporting. Sexual Assault is included by the FBI as a Criminal Offense.

Schools are also required to report the following three types of incidents if they result in either an arrest or disciplinary referral: 1. Liquor Law Violations, 2. Drug Law Violations and 3. Illegal Weapons Possession. If both an arrest and referral are made only the arrest is counted.

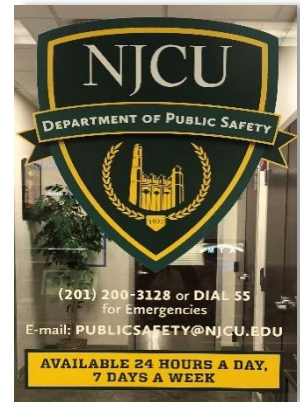
The statistics are also broken down geographically into “on campus,” “residential facilities for students on campus,” non-campus buildings, or “on public property” such as streets and sidewalks. Schools can use a map to denote these areas. The report must also indicate if any of the reported incidents, or any other crimes involving bodily injury, is a “hate crime.”

Mission

Dedicated to maintaining a safe learning, living and working environment for a diverse community, while employing the highest professional standards and providing exceptional customer service.

We will be committed to the following:

- Perform every job to the best of our ability with quality and integrity in mind
- Demonstrate to our customers our abilities through our appearance, our conduct, our conversation and our work
- We will remember that customer, satisfaction is our priority, not necessarily who is right and who is wrong
- Providing quality services that ensure a safe and secure campus
- Learning, changing and improving
- Focusing on results
- Working with integrity
- We will constantly strive to achieve excellence



Department of Public Safety Facts

The Department of Public Safety is committed to enhancing the quality of life of the campus community and integrating the best practices of public and private policing with state-of-the-art security technology. The Department of Public Safety is comprised of the following committed personnel: Associate Vice President, Director, Associate Director, Assistant Director, Fire Safety Manager, Fire Safety Inspector, 1 Technology Administrator, 1 Locksmith, 5 Supervisors, 2 Senior Security Officers, 45 Public Safety Officers, and 1 Program Assistant. The Department of Public Safety has 6 components: Campus Safety, Crime Prevention, Parking and Transportation, Fire Safety, Locksmith Services and Physical Security & Access Control.

NJCU Department of Public Safety

The Department of Public Safety maintains security patrols 24 hours a day, seven days a week on campus by foot and car. We are responsible for ensuring that the campus remains as safe as possible. The primary responsibility for crime prevention and personal safety rests with each individual. Each of us must take personal responsibility for our own safety, as well as for the safety of those around us. Let’s get connected to share questions, concerns or recommendations.



Njcu.edu/dps



Facebook.com/njudps

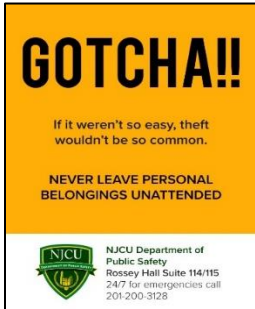


Twitter@njudps



Instagram@njudps

“Security is Everybody’s Business.”



Working together, we will continue to make New Jersey City University among the safest urban universities in the country.

Incidents known in common vernacular as Part I crimes that are identified to the Department of Public Safety are reported to the Jersey City Police Department to ensure that all agencies charged with providing services are aware of these incidents. The relationship and exchange of information with city, state and federal authorities is extremely important, and it is an ongoing process. The Jersey City Police Department alerts the Department of Public Safety of reported incidents in the surrounding neighborhoods that are jointly patrolled by both University Public Safety Officers and the Jersey City Police Department.

Reporting a Crime

To report a crime, emergency situation or suspicious activity dial 55 from any campus telephone or use the campus exterior emergency telephones on campus or dial (201) 200-3128 from both on / off-campus. You can also report a criminal incident in person at the Department of Public Safety, Rossey Hall 115, which is staffed with professional personnel 24 hours a day, seven days a week and by using the Rave Guardian APP.

If possible, please provide the following information when calling:

1. Your name and location.
2. The purpose of the call.
3. Request medical assistance, if required.
4. Be specific as possible:
 - Describe the activity-taking place
 - Describe the person(s) involved.
 - Location where the person(s) involved were last seen or their direction of travel.
 - Description of any motor vehicle involved.



The Department of Public Safety maintains a log for all reported criminal incidents, also are included those that occur on the streets adjacent to the campus community. The data is the basis for crime statistics reported to the FBI Uniform Crime Reporting System, for compliance with the Crime Awareness and Campus Security Act and the College and University Security Information Act for reporting crime statistics to the campus community.

Contacting the Department of Public Safety

“Emergency Assistance” can be obtained from any university phone by dialing “55” which will give the caller a priority connection to the Security Department. This number is similar to “911” in concept and must only be used for true emergencies.

Routine calls for service should be made by dialing 201-200-3128.

Emergency Phones

Emergency blue light telephones are located strategically throughout the exterior of campus. Use them to report emergencies, crimes, suspicious behaviors, accidents and hazards. The Campus blue light emergency phones are easily identified by “emergency phone signs” located on the telephones post. To use this phone, push the button located on the front of the call box. Once activated, a large blue strobe light flashes from the top of the phone tower and are connected directly to a recorded line in the Public Safety Dispatch Center, which is staffed 24 hours a day.



Caller I.D.

The University has installed “Caller ID” on the lines terminating in the Public Safety Command Center. The use of this system will allow the Dispatcher to identify your calling location in the event of an emergency. These phones are connected to a “Caller ID” system, which permits The Department of Public Safety to identify your location should you be unable to speak.

Procedures for Disclosure

The Department of Public Safety serves as the “clearing house” in the statistical gathering of crime data from those with “significant responsibilities for students and campus activities” and reports such statistics involving pertinent criminal incidents and arrests or referrals gathered from various “campus security authorities” to the Public Safety office on a monthly and/or annual basis.

Likewise, the Jersey City Police Department reports pertinent statistics from the required geographical areas to New Jersey City University annually upon request. All figures reported are incorporated in the preceding statistical tables.

Timely Warnings

In the event that a situation arises, either on or off campus that constitutes a continuing threat, a campus wide “timely warning” will be issued by the AVP of the Department of Public Safety in conjunction with the Department of Public Information. The warning will be issued through the college’s e-mail system to students, faculty and staff. Warnings will be issued using the university’s various communication systems. Depending on the particular circumstances of the crime, especially in all situations that could pose an immediate threat to the community and individuals, the Department of Public Safety may also post a notice through the Campus Emergency Notification System NJCU ALERT US providing the university community with more immediate notification. In such instances, a copy of the notice is posted in each residence hall and other campus buildings. Anyone with information warranting a timely warning should report the circumstances to the Department of Public Safety by phone (201) 200-3128 or in person at the dispatch center within Public Safety, Rossey Hall-room 115.

Emergency Response & Evacuation Procedures

New Jersey City University Department of Public Safety has established policies and procedures to ensure the safety and security of the campus community during and after an emergency response and evacuation. Through planning and collaboration between internal and external resources, NJCU Department of Public Safety manages emergency preparedness procedures for the campus community.

Emergency Preparedness

In the event of a dangerous or emergency situation involving an immediate threat against the campus community, the Department of Public Safety is responsible for responding to, and confirming the significance

of the emergency and/or dangerous situation. If it is confirmed that there is an emergency or dangerous situation that poses an immediate threat to the health and safety to members of the University community, the Department of Public Safety in collaboration with University officials will determine the contents of a message and will initiate the NJCU Emergency Notification System (ENS) to communicate the threat to the campus community.



The Department of Public Safety has partnered with the ALICE (**Alert, Lockdown, Inform, Counter, Evacuate**) Training Institute. This course helps the University population prepare and proactively handle the threat of an aggressive intruder or active shooter event. ALICE training option based tactics have become the accepted response, versus the traditional “lockdown only” approach. We encourage all Faculty and Staff member at New Jersey City University to complete the training course. Refer to your email to access the Alice training link.

Emergency Notification

In the event of an emergency situation, the NJCU ALERT US Emergency Notification System (ENS) enables the University to quickly notify members of the University community of critical information during an emergency. The NJCU Department of Public Safety will distribute information to the campus community utilizing one or more of the following Emergency Notification Systems.

Rave Guardian – Rave Guardian is the phone app that allows people to communicate back and forth with the Public Safety Command Center.



Rave Guardian’s “Safety Timer” is described as a virtual safety net, when moving from one location to another.

Rave Guardian’s “Call Campus Safety” feature allows the NJCU population to contact the Public Safety Department in one click! When this is activated, it automatically provides the individual’s information from their profile and their GPS location.

Rave Guardian’s “Send Tips” feature allows individuals to inform Public Safety about emergencies that can occur on campus in a discrete manner; anonymously or overtly.

Rave Guardian’s “Call 9-1-1” feature allows the individual to call 9-1-1

Rave Alert – The Rave Alert consists of a mass notification system that allows authorized University officials to send alerts and instructions to community members through telephone landlines, cellular phones, text messaging and e-mails within moments of a critical incident. Members of the University community are automatically enrolled in Rave Alert using their personal information. However, if any information needs to be edited (if you want to update or add a telephone number for instance), they will [log in to NJCU ALERT US](#) and make the necessary edits.

NJCU ALERT US is designed to notify the Faculty, Staff and Student population with an instant emergency alert notification through, desktop & digital signage, email and Mobile App.

NJCU Website – When an alert is sent the University provides current and continuous updates through postings on the [NJCU website](#).

Public Address System – As an additional layer of communication, the University has installed a campus-wide emergency public address system. The PA system is managed by the Department of Public Safety and will be used during emergency and special situations only. The system integrates into the campus telephone system and offers both flexibility and unlimited future expansion.

Emergency Notification & Response

The NJCU Department of Public Safety is responsible for responding, investigating, documenting and confirming the significance of the emergency or dangerous situation that may pose a threat to the safety and security of the campus community. In the event of a critical incident involving the University, members of the community are encouraged to notify the Department of Public Safety at (201) 200-3128 or dial 55 from any campus phone. In all matters of concern, the Department of Public Safety gathers the necessary information, takes the necessary steps to mitigate the incident, and then notify the appropriate University officials.

If the situation warrants, the Department of Public Safety will notify external local law enforcement and emergency service units to assist in the response of a critical incident occurring within the campus facilities.

Those external agencies include but not limited to the following:

- Hudson County Office of Emergency Management
- Jersey City Office of Emergency Management
- Jersey City Police Department
- Jersey City Emergency Service Unit and Bomb Squad
- Jersey City Fire Department

Remember that preparedness is the key to survival. Please take a few minutes to review [this video](#) which will provide strategies and actions to be taken should you be involved in an active shooter attack.

Crime Log

The Department of Public Safety maintains the crime log for the most recent 60 day period open for the public to inspect during normal business hours, Monday through Friday, except holidays and closure of school. Any portion of the log beyond **60 days**, if not immediately available, will be made accessible within two business days of a request for public inspection.

Notification to the Larger Community

The NJCU Department of Public Safety works in conjunction with University Marketing and Communications Department and local law enforcement officials to coordinate any press releases or contact with the media in regards to any critical incident that pose a threat not only to the immediate University community, but as well as the surrounding residential community.

Exercises and Drills

The NJCU Department of Public Safety conducts annual tabletop exercises and drills to test and assess its emergency response and evacuation procedures. These tabletop exercises are conducted with participating NJCU staff that provides their assessment and evaluation of the exercise. An after action report is then developed to identify where improvements and revisions to the procedures are required.

The Campus Security Act requires Colleges and Universities to:

1. Publish an annual report every year by October 1 that contains three years of campus crime and certain security policy statements.

2. Disclose crime statistics for the campus, public areas immediately adjacent to or running through the campus and certain non-campus facilities and remote classrooms.
3. The statistics must be gathered from campus police or security, local law enforcement and other university officials who have “significant responsibility for student and campus activities.”

Campus Facilities

The New Jersey City University administrative buildings are opened from 8:30 a.m. – 4:30 p.m. Monday – Friday. Academic buildings generally are opened 7:00 a.m. – 11:00 p.m. Monday – Friday and 8:00 am-5:00 pm on Saturday. Buildings that are occupied beyond normal hours are required to adhere to the University’s “After Hours Policy.”

Many cultural and athletic events held on campus are open to the public. The campus bookstore and library are also open to the public. University facilities are well maintained with security concerns given a high priority. Landscaping and outdoor lighting on campus are designed for safety and security. Pathways are designed to provide well-traveled, lighted routes from parking areas to buildings and from building to building. Campus maps are available by contacting the Department of Public Safety.

Housing Options

Home for 625 students, The Housing & Residence Life Program at New Jersey City University offers more than a place to sleep. The University operates three residence halls: COOP Hall, Vodra Hall and our newest building, West Campus Village. Select the hyperlinks for further information.

Please visit the [Housing at NJCU website](#).

All halls offer on-site laundry and kitchen facilities, study lounges, computer labs and on-line computer capabilities for each resident student. West Campus Village also has a work out facility, game room, a conference room as well as a store affiliated with our Dining Services.

Following acceptance to the University, interested students may obtain information and an application form directly from the Office of Housing & Residence Life – Student Union Building, Room 111, (201) 200-2338 or [apply online](#).

Residence Halls

The residence halls are manned by the Office of Housing & Residence Life desk attendants during the day and by Public Safety Officers in the evenings to ensure the overall safety and security of the occupants. All exterior doors and ground floor windows are equipped with panic bars, audible alarms and break away locking devices. It is the resident’s responsibility to ensure that their visitors adhere to the Rules and Regulations of the Residence Life Polices.

During low occupancy periods, such as holidays and scheduled breaks, students are permitted to remain in the halls and coverage continues for that hall. During the summer months, West Campus Village is utilized as primary housing for external community events and athletic programs. COOP and Vodra halls are used for students/interns attending summer classes.

Authorization for use is pre-approved by the Director of Housing & Residence Life, and staff is assigned accordingly. All residence halls operate under the authority of Housing & Residence Life and assigns staff to each residence hall when occupied. Resident students must use their Gothic Card to enter the building. All residence halls have card access and CCTV.

All persons entering the residence halls must either swipe their access card to gain entry or show a valid student photo I.D. card to staff upon entry to the building. All non-residents including vendors must surrender the I.D. card and sign the logbook.

Missing Persons

A person shall be considered missing if the person has not been seen by a roommate, classmate, faculty member, family member, or other campus person in a reasonable amount of time, (24 hours), which suggests that his or her absence is a cause for concern or suspicion.

If a member of the NJCU community has reason to believe that a student or staff member is reported missing, the New Jersey City University Department of Public Safety should be notified **immediately** by calling (201)200-3128, 24 hours 7 days a week. NJCU Department of Public Safety will generate a missing person report and initiate an investigation.

After investigating the missing person report, should NJCU Department of Public Safety determine that the student has been missing for more than 24 hours, NJCU Department of Public Safety will notify Jersey City Police Department and the student's emergency contact no later than 24 hours after the student or staff is determined to be missing.

Missing Resident Student

In addition to registering an emergency contact, students residing on-campus housing have the option to identify, confidentially an individual to be contacted by NJCU in the event the student is determined to be missing for more than 24 hours. If a student has identified such an individual, NJCU will notify that individual no later than 24 hours after the student has been determined to be missing.

A student who wishes to identify a confidential contact may do so through the NJCU Office of Residence Life. A resident student's confidential contact information will be accessible only by authorized campus officials and law enforcement agencies as appropriate.

Reporting Missing Persons

The New Jersey City University Department of Public Safety thoroughly investigates all persons including students reported missing whether they reside on or off campus. To report a missing person, contact the NJCU Department of Public Safety at (201)200-3128, call from any emergency phone or dial "55" from any campus phone. You may also report a person who is missing at the NJCU Department of Public Safety Headquarters located at 2039 Kennedy Boulevard, Rossey Hall, room 115 which is staffed 24 hours 7 days a week.

Student Rights and Responsibilities Code of Conduct

Preamble:

The governance of an institution of higher education is entrusted to the trustees, administration, and faculty and students. In each instance this trust includes a voice in policy making and a participatory role in bringing about necessary and appropriate changes.

All amendments to these statements on Student Rights and Responsibilities shall be made by the Office of the Dean of Students and approved by the Division of Student Affairs.

Please review the [NJCU Code of Conduct](#).

Campus Sexual Assault Policy

New Jersey City University is an academic community whose existence depends on respect, trust, high regard for each student, and strict adherence to standards of conduct set by its members. Sexual assault, in any form, is a serious violation of these standards and will not be tolerated. The University encourages all members of the university community to be aware of both the consequences of sexual assault as governed by the provisions of the Code of Conduct, and the options available to victims. Victims are urged to seek assistance using any of the campus and community resources provided below or at the [Speicher Rubin Women's Center website](#).

All incidents will be taken seriously regardless of gender or sexual orientation.

Sexual assault is defined as sexual conduct without consent and includes:

- sexual contact – intentional touching, either of the victim or when the victim is forced to touch, directly or through clothing, another person's genitals, breasts, thighs, or buttocks
- sexual penetration – vaginal intercourse, cunnilingus, fellatio, or anal intercourse whether by an acquaintance or a stranger without consent
- attempted rape
- sodomy – oral sex or anal intercourse; and
- sexual penetration with insertion of the hand, finger, or object into the anus or vagina either by the actor or upon the actor's instruction; the depth of insertion is not relevant

Consent

Consent is a mutual and understandable exchange of affirmative words or actions which indicate permission to engage in mutually agreed upon sexual activity. Consent must be informed, voluntary, and actively given. Consent is free of force – including physical violence, threats, intimidation and coercion. It is the responsibility of the initiator to obtain clear and affirmative responses at each stage of sexual engagement. The absence of a negative response is not consent. An individual who is incapacitated by alcohol and/or other drugs both voluntarily or involuntarily consumed may not give consent. Past sexual activity does not imply ongoing future consent.

An individual is incapacitated when s/he cannot make rational or reasonable decisions. She / he lacks an understanding of the, *who, what, when, where, why* and *how* of their sexual actions. A person is also unable to give consent if they are physically helpless, asleep or mentally incompetent.

“Acquaintance rape” and “date rape” are terms used to describe a rape in which the victim knows the rapist. They may have dated previously, had a class together, met at a party or be relatives or friends. Regardless of any prior relationship that may have existed, if one person forces another to submit to sexual contact, the act is still a form of sexual assault and a violation of the Code of Conduct.

Confidentiality

Anyone wishing to report a rape or sexual assault of any kind (including a past rape or abuse) can be assured that confidentiality will be maintained to the extent possible. Reporting a rape or assault does not mean formal disciplinary or court action has been initiated.

A permanent record of the receipt of complaint will remain in the Department of Public Safety, with an indication of the disposition of the complaint, and shall remain confidential, subject to court subpoena. The record of any complaint that is upheld shall be made part of the personnel file of the accused for employees or the Dean of Students' disciplinary records for students.

All formal hearing proceedings and all evidence introduced in connection therewith shall be on the record and must be confidential, subject to court subpoena, pending the outcome of any disciplinary proceedings against the respondent.

Notice of Non-Discrimination and Title IX

New Jersey City University (NJCU) is a higher education place of work, teaching, and learning for the benefit of students and the overall campus community. NJCU is committed to providing a campus environment free from discrimination based on sex. Compliance with Title IX of the Education Amendments of 1972, 20 U.S.C. Section 1681 et seq. (“Title IX”) is an important part of this commitment.

Title IX is a federal civil rights law and provides that: *“No person in the United States shall, on the basis of sex, be excluded from participation in, be denied the benefits of, or be subjected to discrimination under any education program or activity receiving Federal financial assistance.”*

Under Title IX, discrimination on the basis of sex includes sexual harassment or sexual violence, such as rape, sexual assault, sexual battery, or sexual coercion.

Reporting Possible Title IX Violations

The university has a responsibility to respond promptly and effectively to address sexual harassment or sexual violence complaints under Title IX. In order to address questions related to Title IX compliance or to facilitate the reporting of violations under Title IX, the following persons have been designated Deputy Title IX Coordinators to whom such inquiries or complaints should be made.

Deputy Title IX Coordinators

Dr. Jodi Bailey
Vice President for Student Affairs, Interim
Student Affairs Division
2039 Kennedy Boulevard
Hepburn Hall, Room 303
Jersey City, New Jersey 07305
jbailey2@njcu.edu
Telephone: 201-200-3507

Dr. Gail Fernandez
Associate Provost, Academic Affairs
2039 Kennedy Boulevard
Hepburn Hall, Room 308
Jersey City, New Jersey 07305
gfernandez7@njcu.edu
Telephone: 201-200-2150

Ms. Randi Miller
Senior Human Resources Director
Human Resources Department
2039 Kennedy Boulevard
Hepburn Hall, Room 105
Jersey City, New Jersey 07305
rmiller1@njcu.edu
Telephone: 201-200-2335 or 201-200-2068

University-wide Title IX coordination of Title IX is provided by Ms. Lisa Marshall, Director of EEO/AA/Diversity, who is the designated Title IX Coordinator for NJCU. She may be contacted at 2039 Kennedy Boulevard, Hepburn Hall, Room 306B, Jersey City, NJ 07305, lmarshall@njcu.edu, (201)200-3075.

In addition to making an inquiry or complaint to one of the Deputy Title IX Coordinators persons who believe they have been subjected to conduct in violation of Title IX should take note of the availability of the following resources for reporting or support and are encouraged to avail themselves of any that they determine to be appropriate for their individual circumstances.

University Resources:

The Office of the Dean of Students – 201-200-3525; Gilligan Student Union (GSUB), Room 111

Division of Student Affairs and Enrollment Management – 201-200-3507; Hepburn Hall, Room 303

***The Health and Wellness Center** – 201-200-3546; Vodra Hall, Suite 107

***The Counseling Center** – 201-200-3165; Gilligan Student Union (GSUB), Room 308

***Speicher-Rubin Women's Center for Equity / Diversity** – 201-200-3189; Gilligan Student Union, Room 318

Office of Equal Employment Opportunity/Affirmative Action/Diversity–201-200-3075; Hepburn Hall, Room 306

Department of Public Safety – 201-200-3128 or DIAL 55 Emergency; Rossey Hall Room 115 – Available 24 hours a day, 7 days a week.

***Confidential Resources** - If students need to speak with a confidential resource, students may contact the Counseling Center, the Health and Wellness Center, or the Speicher-Rubin Women's Center for Equity and Diversity (contact information listed above).

Off Campus Resources:

Hudson SPEAKS Against Sexual Violence (Designated rape crisis center for Hudson County)

Assists survivors of sexual assault in Hudson County; provides free and confidential services to survivors of sexual assault; 24-hour crisis hotline; 24-hour escorts to hospitals, courts, and law enforcement agencies; and individual and group counseling for survivors and their significant others. **Christ Hospital, 179 Palisade Ave., Jersey City; 24-hour hotline, 201-795-5757**

The Jersey City Police Department; 911 Emergency

The Jersey City Police Department refers all sexual assaults to the Hudson County Special Victims Units, who will receive reports of incidents, investigates and makes decisions regarding arrest and prosecution.

Hudson County Prosecutor's Office, Special Victims Unit

555 Duncan Avenue -2nd floor

Jersey City, NJ 07306

201-915-1234 Available 24hrs including weekends and holidays

www.hcpo.org

Liberty Health Behavioral Health Services (Formerly Jersey City Medical Center)

355 Grand Street, Jersey City, NJ 07302

201-915-2455

<https://www.rwjbh.org/jersey-city-medical-center/>

Women's Rising
270 Fairmount Avenue
Jersey City, NJ 07306
Domestic Violence Services 24/7 Helpline 201-333-5700
info@womenrising.org
www.womenrising.com

Love is Respect

Provides information about how you can recognize an unhealthy or abusive relationship. **Offers free and confidential phone, live chat and texting services are available thru a 24-hour hotline 1-866-331-9474 / TTY: 1-800-787-3224 / Text: LOVEIS to 1-866-331-9474 or visit loveisrespect.org to chat online.**

New Jersey Coalition against Sexual Assault (NJCASA)

Also provides a **24-hour hotline 1-800-601-7200**
www.njcasa.org

Rape, Abuse and Incest National Network (RAINN)

A free, confidential, national sexual assault **24-hour hotline 1-800-656-HOPE (4673)**
Also offers online chatting with a trained RAINN support specialist, anytime.
www.rainn.org

Manavi

An organization that supports survivors of violence with a specific focus on the rights and needs of South Asian women. **24-hour hotline: 1-732-435-1414**

State of New Jersey, Department of Children and Families, Services for Women

Provides services and advocacy for women, including a statewide Domestic Violence Hotline that provides a 24-hour, seven-day-a-week confidential hotline for domestic violence victims and others seeking crisis intervention, information and/or referral services **1-800-572-SAFE (7233)**.

TITLE IX Compliance

As an academic community, we share responsibility to foster and maintain a safe campus community free from discrimination on the basis of sex.

With regard to reports of incidents of sexual violence and other conduct in violation of Title IX, all employees (with the exception of the Counseling Center, Health & Wellness Center, and the Speicher-Rubin Women's Center) are required to report any such incidents which come to their attention to anyone of the following persons: Dr. Jodi Bailey, Dr. Gail Fernandez, Ms. Randi Miller or Ms. Lisa Marshall.

Complaints involving Title IX violations may be filed directly with the United States Department of Education, Office for Civil Rights (OCR), Lyndon Baines Johnson Department of Education Bldg. 400 Maryland Avenue, SW Washington, DC 20202-1100. Tel. 800-421-3481; Fax: 202-453-6012, TDD 1-800-877-8339, Email: OCR@ed.gov. Rev. 8/19/21

Guidelines for the Reporter to Follow if a Sexual Assault Has Occurred

- A. Get to a safe place as soon as you can.
- B. Try to preserve all physical evidence. Do not wash, use the toilet, or change clothing, if you can avoid it. If you do change clothes, put all clothing you were wearing at the time of the attack in a paper bag, do not use a plastic bag.
- C. Get medical attention as soon as possible. A medical examination will provide any necessary treatment and collect important evidence. Injuries may not be immediately apparent: you can ask to be tested for sexually transmitted diseases and at a later time, you may want to be tested for pregnancy and/or HIV. A Sexual Assault Response Team (SART) member will assist you to ensure that you are not alone during this process.

Education and Prevention

Campus programs and training will be planned throughout the year to educate the community on how they can work toward the prevention of sexual assault as well as intimate partner violence and stalking. The offerings will include

- New Student Orientation
- Opportunity Scholarship Program Orientation
- Improvisational theatre presentations and discussions
- Workshops on gender issues.
- Presentations to athletes, sororities, fraternities, OSP students, clubs, and resident students
- Events sponsored through the Speicher-Rubin Women's Center for Equity and Diversity, Women & Gender Studies Department, Affirmative Action and Campus Life.
- A commitment by NJCU to make every effort to promote awareness among faculty, staff and students on these various issues, address its effects, and provide victim resources and services.



University Disciplinary Action

Any member of the NJCU campus community who commits crimes of sexual assault can be subject to severe sanctions which may include warning notice, probation, suspension or expulsion. They can also face action through the criminal justice system. Sanctions for employees may include oral reprimand, written reprimand, probation, suspension (with or without pay), or dismissal. Sanctions for students may include a warning notice, probation, suspension or expulsion. Recommendations for sanctions for students will be made to the Dean of Students.

Campus Sexual Assault Procedures

Sexual violence is a serious violation of the New Jersey City University Code of Conduct. New Jersey City University has an obligation to provide for prompt and equitable resolution of sexual violence complaints. In addition, the University strives to protect the whole campus population from any individual who has potentially engaged in a sexual assault and poses a continuing threat to others.

The university will provide due process to all parties who may be adversely affected by the outcome of such proceedings. A campus hearing is an administrative hearing, presided over by the Sexual Assault Hearing

Committee, not a criminal one; therefore, it need not use criminal court procedures as a model. Mediation will not be used to resolve sexual assault complaints. To meet a standard of fairness, a hearing will include the following components:

A. Notice:

The respondent individual(s) will receive notice of an alleged violation of the Code of Conduct.

B. Opportunity To Be Heard:

The respondent will be given the opportunity to hear the evidence against him or her and to present his or her side of the story. The complainant and the respondent may bring one support person to the hearing on prior notice. Support persons, however, may only advise the complainant and respondent, they may not participate in the hearing. Hearings will be closed to the public.

C. Decision On Record:

A decision must be made only on the basis of what is presented in the hearing. A disciplinary proceeding can be handled by the University or by the individual formalizing the complaint. The University can bring the charges and the individual would be the complaining witness. An alternative would be for the victim to bring the charges, with the University facilitating the hearing. Sexual assault can greatly affect the social and academic environment of a university, even if it occurs outside the physical boundaries of the campus. If a member of the University community is convicted of an off-campus sexual assault violation, that individual will be subject to disciplinary action. An individual has the right to remain silent. Silence is not an indication of guilt or innocence. If a criminal case has been filed, the institution is still obligated to proceed with its case, advising the individual that he or she can remain silent. If further action is requested, the Hudson County Prosecutor's Office will be contacted.

The Rights of the Reporter and the Respondent

To encourage the reporting of sexual assault and to ensure fairness to all participants in the campus process, the following are the rights for persons involved in a campus sexual assault proceeding.

The Rights of the Reporter:

- A. The right to a hearing by the N.J.C.U. Sexual Assault Hearing Committee, subject to a preponderance of the evidence standard, in accordance with the U.S. Department of Education, and its Office for Civil Rights (i.e., it is more likely than not that sexual violence has occurred).
- B. The right to a written statement of the Sexual Assault Hearing Panel.
- C. The right to file a no-contact order (with the Office of the Dean of Students) to prohibit retaliation or harassment of the reporter by the respondent, friends, or supporters.
- D. The right to challenge the Sexual Assault Hearing Panel on conflicts of interest (e.g., if the respondent is a member of a particular student organization, the reporter may challenge the presence at the hearing of an advisor from that student organization).
- E. The right to know ahead of time the names of witnesses to be called at the hearing.
- F. The right to have needs promptly addressed.
- G. The right to have a support person accompany him/her through the hearing. All participants of the hearing will be bound by the rules of confidentiality governing the hearing. Subject to court subpoena, all participants have the right to not have their identity revealed outside the confidential proceedings, without consent.
- H. The right to a fair and impartial hearing.

- I. The right not to have past sexual history discussed during the hearing.
- J. The right to a closed hearing.
- K. The right to remain present for the entire proceeding.
- L. The right to have access to any information that will be used at the hearing.
- M. The right to a hearing without unnecessary delays.
- N. The right to be informed within 24 hours of the committee findings, and of the outcome of the hearing.
- O. The right to appeal the decision of the Sexual Assault Hearing Panel in writing within five business days of notification.
- P. The right to know the status of the case at any point during the investigatory process.

The Rights of the Respondent:

- A. The right to written and oral explanation of the charges.
- B. The right to present his or her side of the story.
- C. The right to a written statement of the Sexual Assault Hearing Panel process.
- D. The right to file a no-contact order to prohibit harassment of the respondent by the reporter, friends, or supporters.
- E. The right to challenge the Sexual Assault Hearing Panel on conflicts of interest (e.g., if the reporter is a member of a particular student organization, the respondent may challenge the presence at the hearing of an advisor from that student organization).
- F. The right to know ahead of time the names of the witnesses to be called to the hearing.
- G. The right to have needs promptly addressed.
- H. The right to have a support person accompany him/her through the hearing. All participants will be bound by the rules of confidentiality governing the hearing. Subject to court subpoena, all participants have the right not to have their identity revealed outside the confidential proceedings, without consent.
- I. The right to a fair and impartial hearing.
- J. The right not to have past sexual history discussed during the hearing.
- K. The right to a closed hearing.
- L. The right to remain present for the entire proceeding.
- M. The right to have access to any information that will be used at the hearing.
- N. The right to a hearing without unnecessary delays.
- O. The right to be informed within 24 hours of the committee findings, and of the outcome of the hearing.
- P. The right to appeal the decision of the Sexual Assault Hearing Panel in writing within five business days of notification.
- Q. The right to know the status of the case at any point during the investigatory process.
- R. The right to remain silent.
- S. The right to testify on his/her behalf.

Sexual Assault Hearing Panel

The Sexual Assault Hearing Panel will be composed of members of the Student Assistant Team (SAT), three of whom will hear each complaint. The panel is trained to, and charged with the responsibility of, listening to the allegations and any responses, making a decision as to the validity of the charge, and making a recommended decision and sanction.

Selection Process

The pool from which the members will be selected shall consist of staff and faculty selected by the Dean of Students. The Dean of Students, or her designated appointee, shall also select the three members for each hearing as well as the hearing chair. All members of the SAT will be required to undergo special training prior to serving in order to create a good understanding of sexual assault/harassment, campus investigation procedures, and counseling of reporters.

Sex Offender Registry

New Jersey law authorizes the Division of State Police to make available to the public over the internet information about certain sex offenders required to register under Megan's Law. The sex offender registry law can be found in the New Jersey State Code Title 2c:7-12 to 19.

This information is being made available on the internet to facilitate public access to information about persons who have committed a sex offense, to enable you to take appropriate precautions to protect yourself and those in your care from possible harm.

Public access to registry information is intended solely for the protection of the public, and should never be used to threaten, intimidate or harass another. To review the New Jersey Sex Offender Internet Registry disclaimer, visit the [New Jersey State Police website](#).

Crime Prevention

Crime Prevention and Residential Safeguards

It is well recognized that the prevention of crime provides the best measure of protection. Therefore, The Department of Public Safety operates a proactive crime prevention unit that works closely with the members of the University Community to provide a safe place to work, live and learn.

The Department of Public Safety provides and/or collaborates on presentations to include topics such as personal safety, vehicle and residential security, office and equipment security and sexual assault prevention. Brochures and literature on crime prevention and personal safety are available through the department's investigations/crime prevention office.



Weapons Violations Policy

Policy

The possession, carrying or use of any weapon ammunition, fireworks or explosive by any person is prohibited on University property except by authorized law officers and others specifically authorized by the University (N.J.S.2C:39-5e).

Definition

1. A weapon is any instrument or implement which is capable of inflicting serious bodily injury, and shall include but not be limited to:
 - Any rifle, shotgun, machine gun, or other firearm, or antique firearm suitable for use; any air gun, spring gun, B-B gun or implement that is not a firearm which propels a pellet of any kind with a force that can reasonably be expected to cause bodily harm; any starter pistol, flare gun, zip gun, spear gun, dart gun, sling shot; or ammunition of any type for weapons governed by these regulations.
 - Any knife with a blade larger than that of a folding pocket knife; dagger; razor or other cutting instrument, the blade of which is exposed in an automatic way by switch, push button, spring mechanism, or otherwise.
 - Any striking instrument, including clubs, truncheons, blackjacks, sandbags, metal knuckles, or sap gloves.
 - Any martial arts weapon, including nun chakus, tonfas, kamas and throwing stars.
 - Any bow and arrow combination.
 - Any incendiary device, including flammable liquids enclosed in readily breakable containers that can be equipped with an igniter of any type.
 - Any explosive device, including hand grenades, bombs, black powder, smokeless powder, percussion caps, friction primers and pyrotechnic fuses.
2. Fireworks are defined as any combustible or explosive composition or any substance or combination of substances or any article prepared for the purpose of producing a visible or an audible effect by combustion, explosion, deflagration or detonation and shall include:
 - Any blank cartridge or toy cannon in which explosives are used.
 - The type of balloons, which require fire underneath to propel them.
 - Firecrackers, torpedoes, skyrockets, roman candles, aerials or other fireworks of like construction.
 - Any firework containing any explosive or flammable compound or any tablet or other device containing any explosive device.

Severe disciplinary action up to and including termination will be taken against any employee or student discovered in possession of an unauthorized firearm or similar weapon, or ammunition on University property. The Director of Public Safety or his designee shall be responsible for the prior review and approval of any requests for authorization.

Emergency Resource Numbers



NJCU Switchboard	(201) 200-2000
Department of Public Safety	(201) 200-3128/3127
Health & Wellness Center	(201) 200-3456
Jersey City Police Department	(201) 547-5477
Jersey City Fire Department	(201) 547-4240
NJCU Counseling Center	(201) 200-3165
Liberty Health Systems, Inc. Formerly Jersey City Medical Center	(201) 915-2000
Bayonne Medical Center	(201) 858-5000
Christ Hospital	(201) 795-8200
Towing Service	(201) 656-3321
Lock Out Service	(201) 348-8613
Taxi Cabs	(201) 451-1332, (201) 209-9300, (201) 985-1888

Crime Definitions - Uniform Crime Reporting Handbook

Arson

Any willful or malicious burning or attempt to burn, with or without intent to defraud, a dwelling house, public building, motor vehicle or aircraft, personal property of another, etc.

Manslaughter by Negligence

The killing of another person through gross negligence.

Murder and Non negligent Manslaughter

The willful (non-negligent) killing of one human being by another.

Robbery

The taking or attempting to take anything of value from the care, custody, or control of a person or persons by force or threat of force or violence and/or by putting the reporter in fear.

Aggravated Assault

An unlawful attack by one person upon another for the purpose on inflicting severe or aggravated bodily injury. This type of assault usually is accompanied by the use of a weapon or by means likely to produce death or great bodily harm. (It is not necessary that injury result from an aggravated assault when a gun, knife, or other weapon is used which could and probably would result in serious personal injury if the crime were successfully completed).

Burglary

The unlawful entry of a structure to commit a felony or a theft. For reporting purposes this definition includes: unlawful entry with intent to commit a larceny or felony; breaking and entering with intent to commit a larceny; housebreaking; safecracking; and all attempts to commit any of the aforementioned.

Motor Vehicle Theft

The theft or attempted theft of a motor vehicle. (Classify as motor vehicle theft all cases where automobiles are taken by person not having lawful access even though the vehicles are later abandoned including joyriding).

Weapon Law Violations

The violation of laws or ordinances regulatory in nature, such as: manufacture, sale, transportation, concealment or possession of fire arms, cutting instruments, explosives, incendiary devices or deadly weapons; carrying deadly weapons, concealed or openly.

Drug Abuse Violations

The violation of state and local laws prohibiting the production, distribution and /or use of certain controlled substances and equipment or devices utilized in their preparation and /or use. The unlawful cultivation, manufacture, distribution, sale, purchase, use, possession, transportation or importation of a controlled drug or narcotic substance. Arrests for violations of state and local laws, specifically those relating to the unlawful possession, sale, use, growing, manufacturing and making of narcotic drugs. Arrests for violations of state and local laws, specifically those relating to the unlawful possession, sale, use, growing, manufacturing, and making of narcotic drugs.

Disciplinary Referrals

Individuals referred to the office of the dean of Students for liquor law, drug law and illegal weapons violations. The data includes incidents that are reported via DPS incident reports and reports provided directly to the Deans of Students.

Liquor Law Violations

The violation of laws or ordinances prohibiting: the manufacture, sale, transporting, possessing of intoxicating liquor; maintaining unlawful drinking places; furnishing liquor to a minor or intemperate person; using a vehicle for illegal transportation of liquor; (Drunkenness and driving under the influence are not included in this definition).

Sex Offenses Definitions from the National Incident-Based Reporting System Edition of the Uniform Crime Reporting Program

Sex Offenses-Forcible

Any sexual act directed against another person, forcibly and/or against that person's will; or not forcibly or against the person's will where the reporter is incapable of giving consent. These offenses also include dating/domestic violence and stalking.

Rape

The penetration, no matter how slight, of the vagina or anus with any body part or object or oral penetration by a sex organ of another person without the consent of the reporting person.

Fondling

The touching of the private body parts of another person for the purpose of sexual gratification without consent of the reporting person, including instances where the reporting person is incapable of giving consent because of his/her youth or because of his/her temporary or permanent mental incapacity.

Sex Offenses-Non forcible

Unlawful, non- forcible sexual intercourse.

Incest

Sexual intercourse between persons who are related to each other within the degrees wherein marriage is prohibited by law.

Statutory Rape

Sexual intercourse with a person who is under the statutory age of consent.

VAWA Offenses

Any incidents of Domestic Violence, Dating Violence and Stalking. (Note that Sexual Assault is also a VAWA Offense but is included in the Criminal Offenses category for Clery Act reporting purposes);

Domestic Violence

A felony or misdemeanor crimes of violence committed; (1) by a current or former spouse of the reporting person; (2) by a person with whom the reporting person shares a child in common; (3) by a person who is cohabitating with or has cohabitated with the reporting person as a spouse or intimate partner; (4) by a person similarly situated to a spouse of the reporting person under violence laws of the jurisdiction receiving grant monies, or (5) by any other person against an adult or youth victim who is protected from that person's acts

under the domestic or family violence laws of the jurisdiction in which the crime of violence occurred in which the crime of violence occurred, which includes roommates.

Dating Violence

Dating Violence is defined as violence committed by a person who is or has been in a social relationship of a romantic or intimate nature with the victim. The existence of such a relationship shall be determined based on the reporting party's statement and with consideration of the length of the relationship, the type of relationship, and the frequency of interaction between the persons involved in the relationship. For the purposes of this definition (1) Dating violence includes, but is not limited to, sexual or physical abuse or the threat of such abuse. (2) Dating violence does not include acts covered under the definition of domestic violence.

Stalking

Engaging in a course of conduct directed at a specific person, including without limitation by means of following, monitoring, observing, surveilling, threatening or communicating to or about a person or interfering with a person's property, that would cause a reasonable person to fear for the safety of others or suffer significant mental suffering or anguish that may require medical or other professional treatment or counseling.

Unfounded

Crimes reported to campus authorities but are omitted from the crime statistics because they were later determined through investigation by sworn or commissioned law enforcement personnel to have been false or baseless when made.

Definitions of Geography

On-Campus: Any building or property owned or controlled by an institution within the same reasonably contiguous geographic area and used by the institution in direct support of or in a manner related to the institution's educational purposes, including residence halls; and any building or property that is owned by the institution but controlled by another person, is frequently used by students, and supports institutional purposes. Note: Statistics for university housing facilities are recorded and included in both the all on-campus category and the on-campus residential only category.

Non-Campus Building or Property: Any building or property owned or controlled by a student organization that is officially recognized by the institution; or any building or property owned or controlled by an institution that is used in direct support of or in relation to the institution's educational purposes, is frequently used by students, and is not within the same reasonably contiguous geographic area of the institution. Residence halls that are located outside the campus boundaries are captured in the Non-Campus category.

Public Property: All public property, including thoroughfares, streets, sidewalks, and parking facilities, that is within the campus or immediately adjacent to and accessible from the campus. The NJCU crime statistics do not include crimes that occur in privately owned homes or businesses within or adjacent to the campus boundaries.

Offense Definitions For Hate/Bias Related Crime Statistics As Per The UCR Hate Crime Reporting Guidelines

Hate Crime Data contains information about crimes that manifest evidence of prejudice based on race, religion, sexual orientation, ethnicity, and mental or physical disabilities. The FBI began to collect these data under the Hate Crime Statistics Act of 1990. Information contained in the data includes a number of reporters and offenders involved in each hate crime incident, type of reporters, bias motivation, offense type, and location type.

Bias-Related Acts

Behaviors that express hostility against a person, property or group because of their real or perceived age, color, disability, gender identity or expression, marital status, military or veteran status, national origin, personal appearance, political affiliation, race, religion, sex, sexual orientation, or any other unlawful basis in any university-recognized area of student life. Bias acts may be verbal, graphic, or physical in nature. These behaviors often contribute to creating an unsafe or unwelcoming environment for individuals and social identity groups. Acts can qualify as bias acts even when delivered with humorous intent or presented as a joke or a prank.

Simple Assault

An unlawful physical attack by one person upon another where the offender does not display a weapon, and the reporter does not suffer severe or aggravated bodily injury involving apparent broken bones, loss of teeth, possible internal injury, severe laceration, or loss of consciousness.

Intimidation

To unlawfully place another person in reasonable fear of bodily harm through the use of threatening words and/or other conduct, but without displaying a weapon or subjecting the reporter to actual physical attack.

Destruction/Damage/Vandalism of Property (Except "Arson")

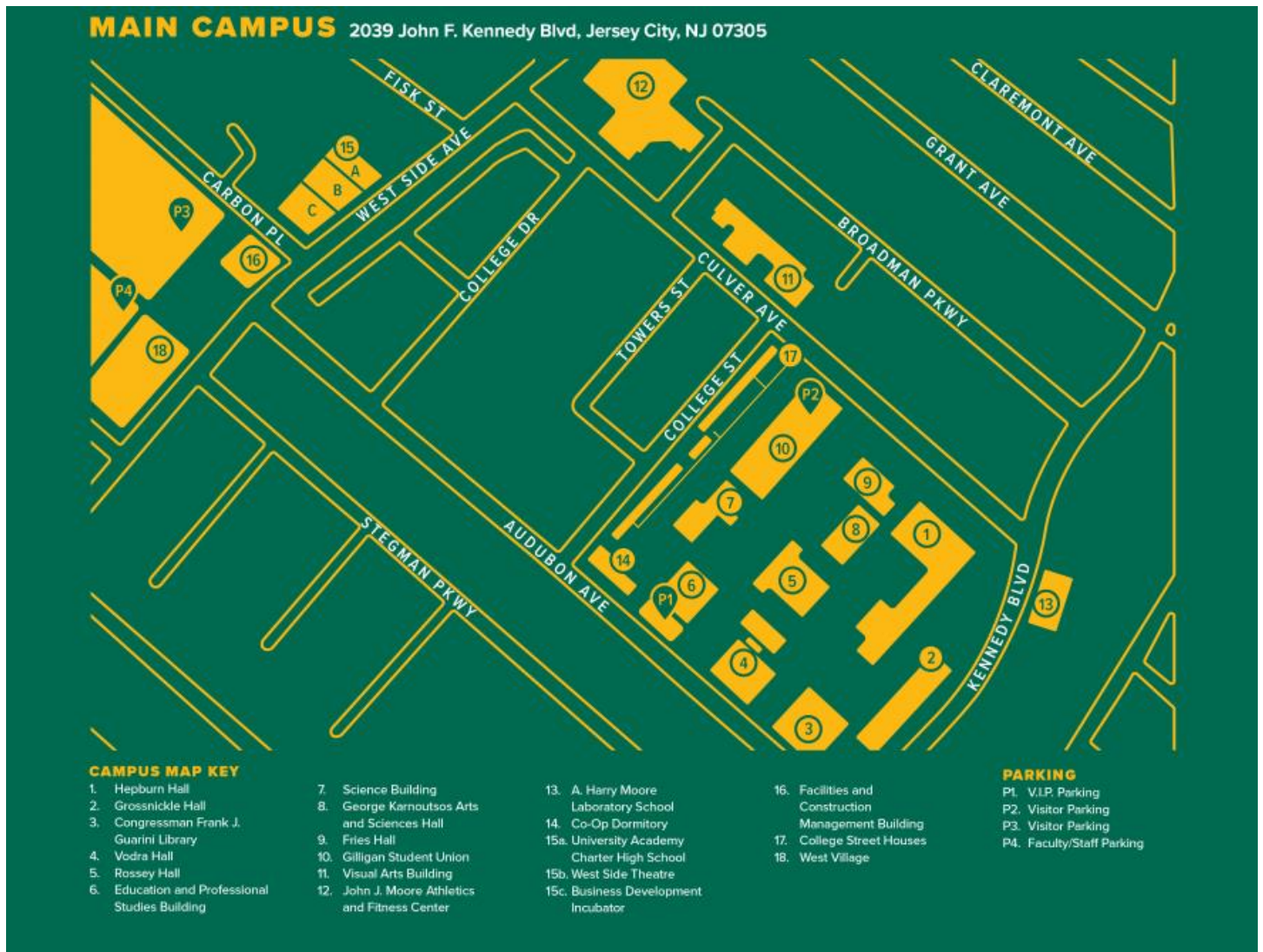
To willfully or maliciously destroy, damage, deface, or otherwise injure real or personal property without the consent of the owner or the person having custody or control of it.

Larceny/Theft Offenses

The unlawful taking, carrying, leading, or riding away of property from the possession, or constructive possession of another. Attempted larcenies are included; embezzlement, confidence games, forgery, worthless checks, etc. are excluded.

Drug/Narcotic Offenses (Except "Driving Under the Influence") The violation of laws prohibiting the production, distribution, and/or use of certain controlled substances and the equipment or devices utilized in their preparation and/or use.

Campus Map



Crime Statistics

	NJCU Campus	NJCU On Campus Residential	NJCU Public Property	Brookdale Campus	Brookdale Public Property	Harborside Campus	Harborside Public Property	Middlesex Campus	Middlesex Public Property	Grand Total
Criminal Homicide										
Murder/Non-Negligent Manslaughter										
2018	0	0	0	0	0	0	0	0	0	0
2019	0	0	0	0	0	0	0	0	0	0
2020	0	0	0	0	0	0	0	0	0	0
Negligent Manslaughter										
2018	0	0	0	0	0	0	0	0	0	0
2019	0	0	0	0	0	0	0	0	0	0
2020	0	0	0	0	0	0	0	0	0	0
Sex Offenses - Forcible										
Rape										
2018	0	0	0	0	0	0	0	0	0	0
2019	0	4	0	0	0	0	0	0	0	4
2020	0	0	0	0	0	0	0	0	0	0
Fondling										
2018	3	0	0	0	0	0	0	0	0	3
2019	1	0	0	0	0	0	0	0	0	1
2020	0	0	0	0	0	0	0	0	0	0
Domestic Violence										
2018	0	0	0	0	0	0	0	0	0	0
2019	1	0	0	0	0	0	0	0	0	1
2020	0	0	0	0	0	0	0	0	0	0
Dating Violence										
2018	0	0	0	0	0	0	0	0	0	0
2019	1	0	0	0	0	0	0	0	0	1
2020	0	1	0	0	0	0	0	0	0	1
Stalking										
2018	7	0	1	0	0	2	0	0	0	10
2019	0	0	0	0	0	0	0	0	0	0
2020	1	0	0	0	0	0	0	0	0	1
Sex Offenses - Non-Forcible										
Incest										
2018	0	0	0	0	0	0	0	0	0	0
2019	0	0	0	0	0	0	0	0	0	0
2020	0	0	0	0	0	0	0	0	0	0
Statutory Rape										
2018	0	0	0	0	0	0	0	0	0	0
2019	0	0	0	0	0	0	0	0	0	0
2020	0	0	0	0	0	0	0	0	0	0
Robbery										
2018	0	0	6	0	0	0	0	0	0	6
2019	0	0	0	0	0	0	0	0	0	0
2020	0	0	0	0	0	0	0	0	0	0

Crime Statistics (cont.)

	NJCU Campus	NJCU On Campus Residential	NJCU Public Property	Brookdale Campus	Brookdale Public Property	Harborside Campus	Harborside Public Property	Middlesex Campus	Middlesex Public Property	Grand Total
Aggravated Assault										
2018	0	1	0	0	0	0	0	0	0	1
2019	0	0	0	0	0	0	0	0	0	0
2020	0	3	0	0	0	0	0	0	0	3
Burglary										
2018	1	0	0	0	0	0	0	0	0	1
2019	0	0	7	0	0	0	0	0	0	7
2020	0	0	0	0	0	0	0	0	0	0
Arson										
2018	1	0	0	0	0	0	0	0	0	1
2019	0	0	0	0	0	0	0	0	0	0
2020	0	0	0	0	0	0	0	0	0	0
Motor Vehicle Theft										
2018	0	0	0	0	0	0	0	0	0	0
2019	1	0	0	0	0	0	0	0	0	1
2020	0	0	3	0	0	0	0	0	0	3
Liquor Law Violations										
Arrest										
2018	0	0	0	0	0	0	0	0	0	0
2019	0	0	0	0	0	0	0	0	0	0
2020	0	0	0	0	0	0	0	0	0	0
Referral										
2018	0	25	0	0	0	0	0	0	0	25
2019	0	15	0	0	0	0	0	0	0	15
2020	0	5	0	0	0	0	0	0	0	5
Drug Law										
Arrest										
2018	0	0	2	0	1	0	0	0	0	3
2019	1	0	0	0	1	0	0	0	0	1
2020	0	0	0	0	0	0	0	0	0	0
Referral										
2018	4	14	0	0	0	0	0	0	0	18
2019	2	40	0	0	0	0	0	0	0	42
2020	0	30	0	0	0	0	0	0	0	30
Weapons Law Violations										
Arrest										
2018	0	0	0	0	0	0	0	0	0	0
2019	0	0	0	0	0	0	0	0	0	0
2020	0	0	0	0	0	0	0	0	0	0
Referral										
2018	0	0	0	0	0	1	0	0	0	1
2019	0	0	0	0	0	0	0	0	0	0
2020	0	0	0	0	0	0	0	0	0	0
Unfounded										
2020	0	0	0	0	0	0	0	0	0	0

Hate Crimes

New Jersey City University strives to foster a safe and healthy learning environment that embodies diversity and inclusion of all members of the NJCU community. The Hate Crime statistics are separated by category of prejudice. The numbers for most of the specific crime categories are part of the overall statistics reported for each year. The only exceptions to this are the addition of simple assault, intimidation, and any other crime that involves bodily injury that is not already included in the required reporting categories.

A Hate Crime is defined as a criminal act and/or attempting, aiding, abetting, advising, inciting, conniving, or conspiring to commit a criminal act (such as arson, assault, burglary, injury to property, kidnapping, manslaughter, murder, rape, robbery, theft, or unlawful entry) based on the actual or perceived race, color, religion, national origin, sex, age, marital status, personal appearance, sexual orientation, gender identity or expression, family responsibility, homelessness, physical disability, matriculation, or political affiliation of a victim of a criminal act. Hate crimes under various federal laws have similar definitions.

If a Hate Crime occurs where there is an incident involving intimidation, vandalism, larceny, simple assault or other bodily injury, the law requires that the statistic be reported as a hate crime. **Note:** A hate or bias related crime is not a separate, distinct crime, but is the commission of a criminal offense which was motivated by the offender's bias.

For example, a subject assaults a victim, which is a crime. If the facts of the case indicate that the offender was motivated to commit the offense because of his / her bias against the victim's race, sexual orientation, gender, religion, ethnicity, or disability, the assault is then also classified as a hate / bias crime. Most speech is not a hate crime, regardless of how offensive it may be.

Hate Crimes Statistics

Hate Crime Statistics Reported by the NJCU Department of Public Safety are reported in accordance with Uniform Crime Reporting Procedures and the Jeanne Clery Disclosure of Campus Security Policy and Campus Crime Statistics Act

2018: One hate crime or bias incident reported

- **Intimidation reported on-campus characterized by a religious bias**

2019: One hate crime or bias incident reported

- **Harassment reported on-campus characterized by sexual orientation / gender**

One hate crime or bias incident reported

- **Intimidation reported on-campus characterized by a religious bias**

2020: No hate crime incidents reported

Annual Fire Safety Report on Student Housing



Introduction

New Jersey City University (NJCU) Department of Public Safety's, Fire Safety Program, was instituted to protect students, faculty, staff, visitors, and facilities from the dangers of fires, explosions, and hazardous conditions which may cause injury or damage. Our program is designed to meet and exceed compliance with Federal Laws, State of New Jersey Fire Prevention Requirements and local laws governing basic life safety and campus protection.

Programs include: fire evacuation drills, fire safety education for students, faculty, and staff; fire inspections of campus buildings and public assembly events, emergency procedure planning and training, fire data analysis, code consultation, general fire safety issue consultation, and coordination and issuance of required permits. We also participate in construction plan review.

At NJCU, we believe that effective fire safety occurs when human elements are appropriately interfaced with modern technological advancements. In order to accomplish our mission, we pursue an aggressive program geared at:

- Training in fire safety awareness for the University Community.
- Fire Safety inspections to ensure Code Compliance.
- Installation, maintenance, and inspection of fire protection equipment.

Higher Education Opportunity Act

New Jersey City University through its Fire Safety Program maintains its compliance with the federal regulations of the Higher Education Opportunity Act (HEOA) and the Fire Safety Right to Know Act. We are committed to providing a safe campus environment for our students, faculty, and staff by complying with and going beyond the requirements of the act. The Jeanne Clery Act information can be found on the [NJCU Department of Public Safety website](#).

Institutions with on-campus housing facilities must publish an annual fire safety report that provides information on the fire safety practices and standards in the housing facilities. NJCU complies with this regulation by including all fire-related incidents at on-campus student housing facilities through its monthly report generated as part of its Fire Safety Program. This monthly report provides the fire-related incidents for on-campus student housing and all of its University owned and operated buildings.

Included in the report are the number and cause of fires in all on-campus student housing facilities; number of fire-related deaths; related injuries; value of fire-related property damage; information on evacuation procedures; fire safety education and training programs; fire safety systems in each student housing facilities; number of regularly supervised fire drills; fire alarm responses; policies on portable electrical appliances, smoking and open flames.

Fire Statistics

For the **2020** year, there have been no fires reported at New Jersey City University in any student housing facilities. In addition, there have been no injuries, deaths, or property damage due to fires.

NJCU Residential Housing Facilities	Total Fires in each building	Fire Number	Date & Time	Cause of Fire	Number of injuries that required medical treatment	Number of deaths related to a Fire	Value of property damage caused by a Fire
Coop Residence Hall	0	0	n/a	n/a	0	0	n/a
Vodra Residence Hall	0	0	n/a	n/a	0	0	n/a
West Campus Village	0	0	n/a	n/a	0	0	n/a

On-Campus Student Housing and Life Safety Systems

All resident buildings are fully equipped with sprinkler and standpipe systems. With the exception of two university buildings, all other business and academic buildings are equipped with sprinkler and standpipe systems as well. Additionally, all buildings on and off campus are equipped with an automatic fire detection and alarm systems.

These systems are monitored by the Department of Public Safety in the communications center 24 hours a day, 365 days a year. The operator can pinpoint the location of a fire, heat or smoke condition with the use of the Truesite Work Station (TSW) at the communication center or at the Fire Alarm Panel. This TSW allows a Public Safety Communications Officer to monitor over 4,200 devices in over 20 buildings at one time.

NJCU Residential Housing	Fire Alarm Monitoring done on-site by DPS	Full Sprinkler System	Smoke Detection Throughout	Fire Extinguishers Throughout	Evacuation Plans posted Throughout
Coop Residence Hall	Yes	Yes	Yes	Yes	Yes
Vodra Residence Hall	Yes	Yes	Yes	Yes	Yes
West Campus Village	No	Yes	Yes	Yes	Yes

Fire Safety Policies for On-Campus Student Housing Facilities

Included in the report are the number and cause of fires in all on-campus student housing facilities; number of fire-related deaths; related injuries; value of fire-related property damage; information on evacuation procedures; fire safety education and training programs; fire safety systems in each student housing facilities; number of regularly supervised fire drills; fire alarm responses; policies on portable electrical appliances, smoking and open flames.

Smoking / Vaping: Prohibited inside the Residence Halls. According to New Jersey State Law, effective, October 21, 2005, smoking of any tobacco containing product (including vaping) is not permitted in any college operated facility that serves as a student residence. The University has designated areas outside the residence halls available to smokers. Violators face disciplinary sanctions as well as financial responsibility for the violations.



Open Flame: Fire or smoke producing articles are not permitted to be burned in the Residence Halls.



The following is a list of prohibited items that are considered a violation in the Residence Halls and are subject to revision by the Division of Safety & Security as needed.

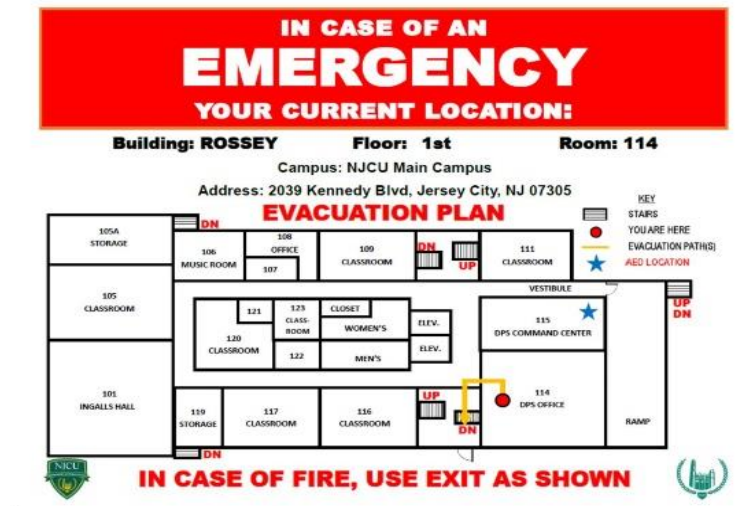
- Unmanned Aircraft System (UAS), commonly known as a drone
- Bunsen burners
- Lanterns/oil lamps and flammable liquids
- Kerosene / halogen lamps
- Candles, incense, air fresheners with plug in adapter, fragrance burners
- Live holiday decorations / vegetation (holiday trees, garlands, etc.)
- Fireworks, explosives or any highly volatile chemical material
- Combustible decorations / items / fuels
- Space heaters and air conditioners
- Lighter fluid liquids (Naphtha)
- Chemical mace and/or pepper spray
- Electrical heat-producing appliances, such as; portable stoves, hot plates, microwaves crock pots, waffle irons, percolators, toasters, toaster ovens, George Foreman grills, sandwich makers, popcorn poppers, etc.
- *Non-Institutional Furniture

***Non-Institutional Furniture:** No couches, chairs, futons, inflatable mattress/furniture, or other upholstered furniture are permitted in University housing unless a resident can provide manufacturers' certification that the furniture meets California Technical Bulletin 133 for fire retardant upholstered furniture.

Emergency Evacuation in Case of Fire

New Jersey City University conducts announced and unannounced scheduled fire drills at various hours throughout the day and evening. Special emphasis is placed on the residence halls. In addition, all fire drill reports are kept on file for review by the NJ Division of Fire Safety and the Jersey City Fire Prevention Bureau.

If a student, faculty, or visitor should need to report a fire anywhere on campus, the Department of Public Safety should be notified at **201-200-3128** or by dialing “**55**” from on campus telephone. All occupants will evacuate the buildings immediately in the event of a fire or alarm and shall comply with posted evacuation procedures.



- If students encounter heat and/or smoke in the hallway, leave the room, carefully closing the door and proceed to the nearest exit/stairwell.
- Always use the stairs to evacuate the building; never use the elevator during a fire or fire alarm.
- If students encounter smoke, they are to take short breaths through their nose and stay as close to the floor; crawling, if possible.
- Once outside the building, Department of Public Safety staff will help guide you to a safe area of refuge for the duration of the incident.
- Disabled persons who require assistance in evacuating should stay near their doors until assistance arrives.
- Evac-U-Trak chairs are available in some locations for safe evacuation from the building.
- Always ask someone with a disability how you can help before attempting to give any assistance.
- Remember, students are not expected to fight fires.

Training

The Fire Safety Manager or designee conducts workshops during freshmen and residence life orientation each year. Workshops are also available to all university members upon request at any time. University Staff members who hold NJ Fire Inspector/Fire Official Certification attend continuing education programs each year. The following are examples of training:

- NJCU fire extinguisher vendors conduct on campus fire extinguisher classes for the protection of faculty, staff and students.
- The Jersey City Fire Department conducts drills on campus of the various campus buildings covering all shifts. *Special emphasis is given to residence halls.*
- The Department of Public Safety conducts fire drills in all buildings, in addition to those conducted with the Jersey City Fire Department.
- Fire safety awareness programs/ activities are held during Fire Prevention month (October) that include; dormitory fire safety workshops, portable hands on fire extinguisher training, fire safety presentations, and educational activities.
- Familiarization tours are conducted with the Jersey City Fire Department on a periodic basis.
- Public Safety Personnel are cross- trained to conduct inspections of the campus facilities to recognize the hazards and risks associated with fire and life safety.
- Public Safety Personnel are also trained in properly using Evac-U-Trak chairs to evacuate persons with disabilities.

Health and Safety Inspections

University staff conducts health and safety inspections in all of the university buildings and grounds. Health and Safety inspections include the documentation, testing and examination of exit / emergency lighting, emergency phones, Evac-U-Trak chairs, fire extinguishers, automatic external defibrillators, emergency generators, fire pumps and related valves and equipment.

Resident Hall inspections are conducted in collaboration with the office of Residence Life, Facilities and Construction Management and Housekeeping. These inspections are performed at least bi-annually and are designed to identify health and safety conditions which could potentially cause harm to a resident or other community members of the university.

The inspections include but are not limited to, the removal or tampering of fire and life safety equipment, a visual examination of electrical cords, sprinklers, smoke detectors, fire extinguishers, and the presence of any prohibited items.

Residential rooms are also examined for proper door closure operation and include a general assessment of overall cleanliness, food and waste storage.

Conditions warranting actions from violations that would be detrimental to the residents or other members of the university community are reported to the Director of Residence Life and the Dean of Students. If necessary, applied sanctions can range from fines to expulsion from housing and prohibited items are confiscated.

Specific Health and Safety policies and procedures are outlined in the Resident Life Handbook as well as the Occupancy Agreement.

Residence Life staff may enter any room at any time for the purposes of inspections, establishment of order, maintenance, or in case of emergency or other reasonable cause.

Fire Drill Procedure

- Fire drills will be initiated by the activation of a device setting off the horns and strobes located throughout the building.
- All faculty, staff, and students must respond immediately and move quietly to the nearest exit in an orderly fashion. This shall happen regardless of whether it is a drill or an actual emergency.
- All members of the University community must follow the rules of safety by quickly clearing the corridors and exits and moving 100 feet away from the building to assigned assembly areas.

Note:

- Do not use elevators.
- Close all doors but do not lock.
- Do not re-enter the building until notified by the Department of Public Safety in conjunction with Fire Department.

Definitions

Fire: rapid oxidation of combustible material accompanied by heat, light and smoke of combustible material, which is found outside of its normal appliance, whether or not it is extinguished prior to arrival of emergency.

Fire-Related Deaths: Number of persons who were fatalities because of a fire incident, including death resulting from a natural or accidental cause while involved in fire control, attempting a rescue, or persons escaping from the fire scene (an individual who dies within one (1) year of injuries sustained as a result of a fire).

Fire-Related Injuries: Number of persons receiving injuries from fire-related incidents, including an injury from a natural or accidental cause who received medical treatment at a local medical facility. This includes first responders attempting to control the fire, attempting a rescue, or persons escaping from the fire scene. Persons may include students, faculty, staff, visitors, firefighters, or any other individuals.

Estimated U.S. Dollar Loss Related to Fire Incidents: Estimated total U.S. dollar loss of both contents and structure or property destroyed because of a fire incident, not loss of business.

Evacuation Procedures: When a fire alarm is activated, evacuation is mandatory. **DO NOT** use elevators; evacuate the building using the nearest available exit and proceed to the assembly area to begin an accountability and assessment process.

Fire Alarm Monitored by the Truesite Workstation: Fire Alarms are monitored 24 hours a day, seven days a week, and 52 weeks a year within the Department of Public Safety dispatch center.

Fire Safety Training Programs Delivered: Number of training programs delivered by Fire and Safety Services to occupants of residence halls concerning fire prevention and preparedness.

Building Equipped with Fire Alarm Systems and Smoke Detectors: Buildings that have functional fire alarm systems and smoke detectors installed. Please note all residence halls are equipped with functional fire alarm systems and smoke detectors.

Buildings Protected with Automatic Sprinkler System Throughout: Indicates an automatic sprinkler system protects all areas of a building. Please note all residence halls are equipped with sprinkler systems throughout. All systems are wet-pipe systems.

Emergency Evacuation Drills (formerly known as Fire Drills): The numbers of supervised scheduled fire drills or actual events at campus residence halls are facilitated by the Fire Safety Coordinator and documented in cooperation with assigned Department of Public Safety personnel. Various drills are conducted throughout the year to familiarize students, faculty and staff with emergency procedures and individual roles.

Additional Resources

Strategic Partners in Protection

Information Technology Services
Residence Life Services
Office of Student Services
Facilities and Construction Management

Public Sector Partners

Department of Community Affairs, Bureau of Fire Safety
Jersey City Fire Department

Private Sector Partners

Simplex Grinnell
FM Global
AllComm Technologies

Fire Safety Staff

Fire Official/Fire Safety Manager
Fire Prevention Officer
Department of Public Safety
E-mail: firesafety@njcu.edu

Telephone Numbers

Main Number:

201-200-2000

Department of Public Safety:

Non-Emergency: 201-200-3128
Emergency: X 55
Administration: 201-200-3127

Residence Life:

201-200-2338

Office of the Dean of Students:

201-200-3525

New Jersey City University
Department of Public Safety
2039 Kennedy Boulevard
Jersey City, New Jersey 07305
Phone: 201-200-3128
Fax: 201-200-2240
E-mail: publicsafety@njcu.edu